



# Surrey Archaeological Society

No 51

March 2025

## E-newsletter

Welcome to the Society's March e-newsletter, which highlights a few of the various event – conferences, lectures, training sessions, news items, etc – which we hope to be of interest to our members. Although general queries should continue to be directed to [info@surreyarchaeology.org.uk](mailto:info@surreyarchaeology.org.uk), those interested in volunteer opportunities or general outreach can contact me at [outreach@surreyarchaeology.org.uk](mailto:outreach@surreyarchaeology.org.uk). Please also keep up-to-date via the website and social media ([@surreyarch](https://www.instagram.com/surreyarch)) for group and event updates.

Anne Sassin (*SyAS Outreach Projects Manager*)

### Surrey Photographers

The Surrey Local History Committee is holding its spring day conference on 'Surrey Photographers' at Surrey History Centre on **Saturday 26 April** (10:00-16:00). Tickets are £18 if booked online (£20 on the day). See the [event page](#) for booking and the full programme.



Talks include:

Keith Harding, 'Victorian Dorking in photographs by Walter Rose & John Chaplin'

Nigel Balchin, 'Picture postcards and local history'

Jane Lewis and Jill Hyams, 'Portrait of a Surrey town between the wars: the photographic archive of Sidney Francis'

Julian Pooley, 'Patient Portraits from Surrey Hospitals, 1850-1980'

Chris Sheppard, 'Farnham's war caught by the camera? Photographs that avoided the censor'

There will also be a visit to the Search Room in the afternoon to see a display of Surrey photographs from the archive.

### One thousand years of solitude?

The Prehistoric Group has arranged a free Zoom talk by Paul Garwood of Birmingham University (Senior Lecturer in Prehistory) on **Tuesday 29 April** at 19:30 discussing the role of Neolithic pottery in south-east England, in the talk 'One thousand years of solitude? Social lives and transformation in the Middle and Late Neolithic of south-east England, 3500-2500 BC'. [Online booking](#) is now available for this event.



## Banstead community test pitting

Members of Plateau, the Society's local group dedicated to the North Downs plateau in the area bounded by Headley, Box Hill, Mogador, Chipstead, Woodmansterne, Banstead, Nork and Tadworth, are running a multi-year test pitting programme to investigate the development of the village of Banstead and identify sites for further investigation. The 2025 season will take place on 8-10 Saturdays between **5 April** and **October**. The project is open to all, so if you live in – or have an interest in – this area and would like to take part, please contact Plateau at [plateau.surrey@gmail.com](mailto:plateau.surrey@gmail.com).

## Albury Park community test pitting

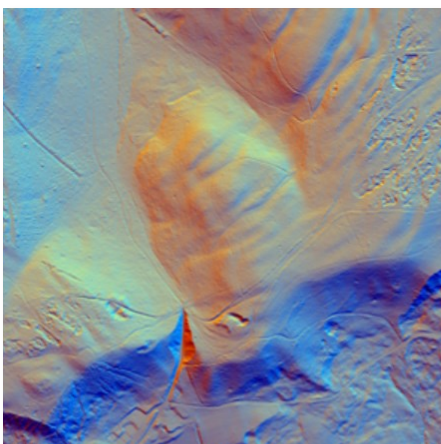
We will be returning for a third year of test pitting this season at Albury Park to investigate its deserted medieval settlement, displaced in the early 19th century (to the current village of Albury). Though little now remains of the former cottages, with the help of survey and a large-scale series of test pits spread across the site, we are working to uncover and learn more about the original settlement!

Currently for 2025, two separate weeks of test pitting are planned, **Monday 9 to Thursday 12 June** and **Monday 8 to Thursday 11 September**. There may be additional survey days as well. Volunteers are welcome for both finds and digging; no prior experience needed. If interested in taking part and wanting to be added to the project mailing list, please contact our community archaeologist Anne at [outreach@surreyarchaeology.org.uk](mailto:outreach@surreyarchaeology.org.uk).



## LiDAR Portal

The [Surrey LiDAR Portal](#) is an on-going online interactive citizen science map which includes various LiDAR datasets for all of Surrey, including the historic county, as well as historic maps and HER data to help in analysing the imagery.



LiDAR has enormous potential to uncover previously unknown archaeological features, and by helping map and interpret these sites online, volunteers can work to build a more complete story of the local landscape. Anyone is welcome to register for a free account, which will allow access to the interactive map. Volunteers who would like to be involved and help in digitising features should read the available tutorials and are encouraged to attend online training sessions (please contact us at [outreach@surreyarchaeology.org.uk](mailto:outreach@surreyarchaeology.org.uk) if you are interested, as we can discuss arranging a bespoke session).



## Shining a Light on Roman Roadside Settlements in South-East England and beyond

On **Saturday 7 June**, the Roman Studies Group will again be holding its bi-annual conference, in conjunction with Sussex Archaeology and History. This will be a hybrid conference, held at Kings Church, Brooks Road, Lewes, Sussex, BN7 2BY and with an online option.

10:00-10:10 Dr David Rudling, Chairman's welcome

10:10-11:00 Prof Tony King, 'On the road in the Western Roman Empire: ancient motels, caravanserais and emporia'

11:30-12:15 Mike Luke, 'Alfoldean: what do we know after 100 years of archaeological investigation?'

12:15-13:00 David Calow, 'Four coin-rich roadside settlements in Surrey'

14:00-14:40 Chris Butler, 'The Roman settlement at Hassocks in its landscape setting, and its Anglo-Saxon successor'

14:40-15:20 Rob Wallace, 'Bridge Farm: the nature of a defended settlement at the junction of two Roman roads and the River Ouse'

15:40-16:10 Matt Sparks and David Rudling, 'Roman Croydon: the course of the road and the location of the settlement'

16:10-16:40 David Staveley, 'Icklesham: which came first, the chicken or the settlement?'

16:40-16:50 David Calow, Chairman's closing remarks

Conference fees (including refreshments as above) £20 (or Early Bird £18); or £15 online (or Early Bird £12). Booking will open soon but see the [event page](#) for info.

### SyAS Research Committee Grants

The Research Committee would like to remind all members that grants are available for Surrey projects and are available to Society groups with no budget and to external groups with limited resources. Society excavations such as Abinger in 2024 and post-excavation for Ashted, Abinger and Flexford have been funded. Surveys, documentary research, training and scientific analyses are all suitable for consideration and have been supported by Society grants in recent years, such as work on the historic excavation at Lightwater and to enable a report on the more recent Hatch Furlong dig to commence. Scientific analyses are also specifically covered by funds from the Bierton and Slade bequests which have recently funded C14 dating for the Abinger excavation. Applications are considered throughout the year and the Committee's decision is final. Details and an application form are available on the website or from the office.

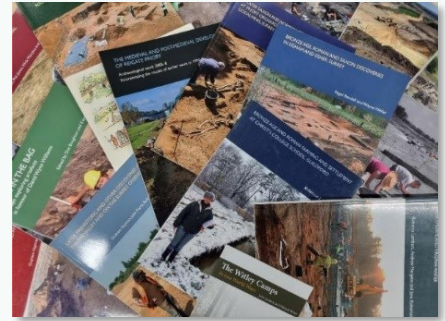


## SCAU publications available for free download

SCAU are pleased to announce that a selection of Surrey County Archaeological Unit publications are now available to download for free on the Archaeology Data Service (ADS) as part of an initiative which will make the research more widely accessible. These publications include their Monographs and Occasional Papers, offering valuable insights into Surrey's rich archaeological heritage.

Monographs – access [here](#); Occasional Papers – access [here](#). Please follow the links to see the full list of publications available.

For those who prefer hard copies, all publications remain available for purchase from Surrey History Centre during normal opening hours, as well as online via the [Surrey Heritage Online Shop](#).



**Celebrating 50 years**  
**50 ASE**  
**1974–2024**

**Anniversary Conference**  
Saturday 5th April 2025

Join us for a journey through time and be part of our 50th anniversary finale!

**Celebrate 50 years of archaeological discovery and innovation at the Archaeology South-East 50th Anniversary Conference!**

- Open to anyone interested in the archaeology of south-east England
- Our story from Sussex Archaeological Field Unit to ASE
- Keynote talks from ASE staff and external guest speakers showcasing our research and projects past and present
- Networking opportunities for professional and local community archaeologists
- Displays highlighting recent finds and innovative techniques
- Bookstall and much more....

To book tickets scan the QR code or visit:  
<https://www.ucl.ac.uk/archaeology-south-east/ase-50>

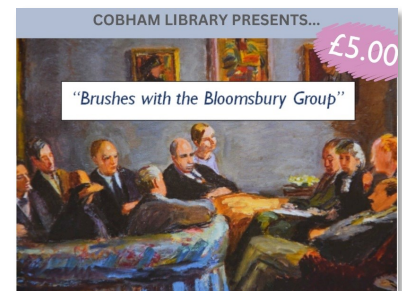
## Archaeology South-East 50th conference

Archaeology South-East is in its 50th anniversary year and are planning a conference day event on **Saturday 5 April** in Portslade, near Brighton, to celebrate. This event is open to anyone interested in the archaeology of the south-east and how ASE and its predecessors have played a key role in pushing forward understanding of our past in this region. The day will showcase their work, past and present, with insights into current research from both ASE staff and special guest external speakers. Programme and booking [online](#).

Speakers include: Louise Rayner, David Rudling, Matt Pope, Paul Garwood, Hayley Nicholls, Angus Forshaw / Rob Cullum, Melanie Giles, Michael Shapland, Elke Raemen / Sarah Wolferstan, Martin Bell.

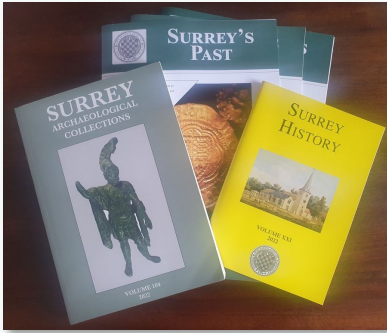
## Brushes with the Bloomsbury Group: The Lushingtons of Cobham and my personal encounters

This talk by Dr David Taylor, FSA, will take place at Cobham Library on **Friday 9 May** at 13:00. To book, please email [cobham.library@surreycc.gov.uk](mailto:cobham.library@surreycc.gov.uk), or visit the desk in the library. Cost: £5 per person.





## Thinking about joining and getting involved?



If you aren't yet a member of SyAS, now is the perfect time to join! In addition to three issues of *Surrey's Past* a year, the annual journal(s) *Surrey Archaeological Collections* and *Surrey History*, members have access to a wide range of field-work opportunities, research projects and special interest groups, many with their own programmes. To join (and see the full range of what is offered), please visit our [website](#). Some of the groups you might wish to join include:

Artefacts and Archives Research Group (AARG) – On-site processing of artefacts, with further work carried out at weekly meetings, including lithics and pottery; for more details on sessions and work available, visit the [AARG webpages](#).

Medieval Studies Forum – In-person and online talks with workshops and visits focused on the period from c.400-1600; for more details, visit the [MSF](#) webpage.

Prehistoric Group – In-person meetings, regular newsletter and study of collections in museums; for more details, visit the [PG](#) webpage.

Roman Studies Group – A varied programme which includes fieldwork, monthly lecture meetings, full-day seminars and day trips; for more details, visit the [RSG](#) webpage.

Surrey Industrial History Group – In-person visits, regular meeting programme, bi-monthly newsletter and annual journal; for more details, visit the [SIHG webpage](#).



### Surrey Industrial History Group lecture series

SIHG hold regular short talks at Leatherhead and via Zoom throughout the year which are free to SIHG members (annual membership is currently free until the end of 2026; contact [membership@sihg.org.uk](mailto:membership@sihg.org.uk)).

Talks can be found [online](#), including the next one with Anne Anderson on 'The Ashtead Pottery: Post-War Rehabilitation through an Alliance of Art and Industry' in Leatherhead on **Thursday 3 April** at 14:00 and Lucinda Gosling 'It's All a Bit Heath Robinson – Re-inventing the First World War' on Zoom on **Thursday 10 April** at 19:15. See the website for the full programme.

For more information on opportunities in your local region, be sure to follow SCAU ([education.scau@surreycc.gov.uk](mailto:education.scau@surreycc.gov.uk) and [@diggingsurreypast](#)), as well as the Council for British Archaeology South-East ([www.cbасouth-east.org](http://www.cbасouth-east.org) and [@CBASouthEast](#)).