

Surrey Archaeological Society

No 49

January 2025

E-newsletter

Welcome to the Society's January e-newsletter, which highlights a few of the various events – conferences, lectures, training sessions, news items, etc – which we hope to be of interest to our members. Although general queries should continue to be directed to info@surreyarchaeology.org.uk, those interested in volunteer opportunities or general outreach can contact me at outreach@surreyarchaeology.org.uk. Please also keep up-to-date via the website and social media ([@surreyarch](https://www.surreyarchaeology.org.uk)) for group and event updates.

Anne Sassin (*SyAS Outreach Projects Manager*)

Book now for the Annual Symposium!

The Annual Symposium of the Society, featuring a full day of exciting new research and fieldwork throughout the county, will be held on **Saturday 8 March 2025** (10:00-16:30) in East Horsley Village Hall. Online booking is now available (tickets £12) via the [website](https://www.surreyarchaeology.org.uk).

Participants are reminded that displays, including Margary Award entries, are still very welcome. Please contact info@surreyarchaeology.org.uk to book a table.

The full programme is available online and includes the following talks:

'Community Archaeology in Surrey – 2024 round-up', Anne Sassin (SyAS)

'Portable Antiquities Scheme – 2024 update', Simon Maslin (PAS)

'Bronze Age Settlement at Painshill', John Boothroyd (OA)



'Late Iron Age & Roman settlement at Dunsfold Park Access Road', Gerry Thacker (OA)



'Outwood to Buckland Strategic Water Main', Giles Dawkes (ASE)



'Industrial History of the Wandle', Mick Taylor (Wandle Industrial Museum)



**Surrey Archaeological Society
Annual Symposium 2025**

**Saturday 8 March
10:00-16:30**

**East Horsley Village Hall
www.surreyarchaeology.org.uk**





Meet our Trustees



Christopher Coombe

I first took an interest in archaeology when our headmaster allowed us to escape an afternoon of his Latin and Greek lessons to help him 'save' a Roman Villa which was sadly in the path of the M5 then under construction through Somerset. It's been a hobby ever since. More recently Northumbrian holidays have seen me on hands in knees at Vindolanda for a dozen seasons. When I stopped my full-time work as a lawyer involved in large property development schemes, I was glad to go from poacher to gamekeeper and see the archaeologists' work for what it truly is: a vital part of the recording of the culture and history of mankind. We can only (and literally) scratch the surface of small sites, but volunteering is key to the success of the Society.

On retirement from full-time work, I took a Certificate at Birkbeck then the MA at Reading in Roman Archaeology, and have been a member of the Society for many years, latterly as a trustee and member of the investment committee. I live in Wimbledon where my wife and I support and volunteer at our local Wimbledon Museum. My time otherwise, at the moment mostly, is spent as part of Save Wimbledon Park Limited, fighting to save our local Capability Brown Park from development (www.savewimbledonpark.org).



Jon Cotton

Strange as it now seems looking back, in 2025 I will have been a member of SyAS for 50 years. I first joined the Society as a student having worked as a schoolboy volunteer on local sites in Croydon, Carshalton, Ewell and London. Following Uni I was employed by the Museum of London's Dept of Urban Archaeology, thereafter transferring to the Dept of Greater London Archaeology under Harvey Sheldon, where I spent the '80s carrying out field work across old west Middlesex. The '90s and '00s saw me 'on long loan' as Curator (Prehistory) within the MoL at London Wall, responsible for the care, research and display of the marvellous prehistoric collections – a role that brought me once again into close contact with the archaeology of the river Thames, an interest I retain to this day. Since taking early retirement in 2011 I have returned to my roots to work as an independent archaeological researcher for teams across the south-east, specialising, not surprisingly, in prehistoric finds.

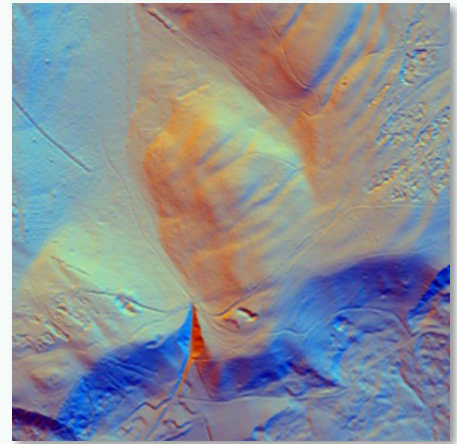
Away from archaeology my wife and I are doting grandparents with a wide range of memberships and eclectic musical interests. (I discovered a new musical genre, symphonic heavy metal, during lockdown – an acquired taste not widely shared at home!) I am also a long standing (and long suffering) season ticket holder at Crystal Palace FC, well versed in arranging the LAMAS annual conference so as to avoid home games. To borrow the club's theme and merchandise line, at heart I am, and remain, 'South London and proud' ... !



LiDAR Portal

The [Surrey LiDAR Portal](#) is an online interactive citizen science map which includes various LiDAR datasets for all of Surrey, including the historic county, as well as historic maps and HER data to help in analysing the imagery.

LiDAR has enormous potential to uncover previously unknown archaeological features, and by helping map and interpret these sites online, volunteers can work to build a more complete story of the local landscape. Anyone is welcome to register for a free account, which will allow access to the interactive map. Volunteers who would like to be involved and help in digitising features should read the available tutorials and are encouraged to attend online training sessions (please contact us at outreach@surreyarchaeology.org.uk if you are interested, as we can discuss arranging a bespoke session).



Groundtruthing sessions are currently being planned for the winter, including at Netley Park on **Tuesday 25 February** and **Monday 3 March**, with further dates coming soon. Please contact us at the above address if you are interested in groundtruthing work.

Medieval Houses study day

This spring's Medieval Studies Forum meeting will be themed around Medieval Houses and take place on **Saturday 22 March** at East Horsley Village Hall from 10:00-15:00. The full programme is online but includes the following talks:



'West Horsley Place' by Martin Higgins (Surrey Domestic Buildings Research Group)

'High Bank, West Horsley, dating from 1375' by Brigid Fice (Surrey Domestic Buildings Research Group)

'Buildings researched and documentary records' by Jeremy Clarke

'How to make a brick on Effingham Common' by Dr Mark Eller (Mole Valley Geological Society)

'Scadbury Medieval Moated Manor House, Chislehurst, Kent' by Dr Janet Clayton (Orpington and District Archaeological Society)

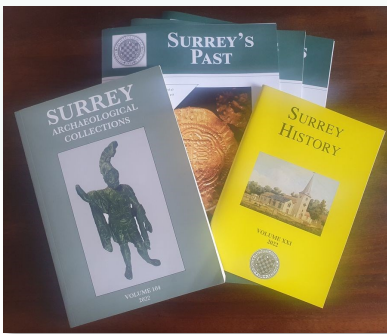
Payment is available online through the [event page](#) or cash on the day. Space is limited so please do book in advance. E-mail medforum@hotmail.co.uk with any queries.



Research Committee Grants

The Research Committee would like to remind all members that grants are available for Surrey projects and are available to Society groups with no budget and to external groups with limited resources. Society excavations such as Abinger in 2024 and post-excavation for Ashted, Abinger and Flexford have been funded. Surveys, documentary research, training and scientific analyses are all suitable for consideration and have been supported by Society grants in recent years, such as work on the historic excavation at Lightwater and to enable a report on the more recent Hatch Furlong dig to commence. Scientific analyses are also specifically covered by funds from the Bierton and Slade bequests which have recently funded C14 dating for the Abinger excavation. Applications are considered throughout the year and the Committee's decision is final. Details and an application form are available on the website or from the office.

Thinking about joining and getting involved?



If you aren't yet a member of SyAS, now is the perfect time to join! In addition to three issues of *Surrey's Past* a year, the annual journal(s) *Surrey Archaeological Collections* and *Surrey History*, members have access to a wide range of field-work opportunities, research projects and special interest groups, many with their own programmes. To join (and see the full range of what is offered), please visit our [website](#). Some of the groups you might wish to join include:

Artefacts and Archives Research Group (AARG) – On-site processing of artefacts, with further work carried out at weekly meetings, including lithics and pottery; for more details on sessions and work available, visit the [AARG webpages](#).

Medieval Studies Forum – In-person and online talks with workshops and visits focused on the period from c.400-1600; for more details, visit the [MSF](#) webpage.

Prehistoric Group – In-person meetings, regular newsletter and study of collections in museums; for more details, visit the [PG](#) webpage.

Roman Studies Group – A varied programme which includes fieldwork, monthly lecture meetings, full-day seminars and day trips; for more details, visit the [RSG](#) webpage.

Surrey Industrial History Group – In-person visits, regular meeting programme, bi-monthly newsletter and annual journal; for more details, visit the [SIHG webpage](#).

For more information on opportunities in your local region, be sure to follow SCAU (education.scau@surreycc.gov.uk and [@diggingsurreypast](#)), as well as the Council for British Archaeology South-East (www.cbасouth-east.org and [@CBASouthEast](#)).