



Surrey Archaeological Society

No 45 September 2024

E-newsletter

Welcome to the Society's September e-newsletter, which highlights a few of the various events – conferences, lectures, training sessions, news items, etc – which we hope to be of interest to our members. Although general queries should continue to be directed to info@surreyarchaeology.org.uk, those interested in volunteer opportunities or general outreach can contact me at outreach@surreyarchaeology.org.uk. Please also keep up-to-date via the website and social media ([@surreyarch](https://www.instagram.com/surreyarch)) for group and event updates.

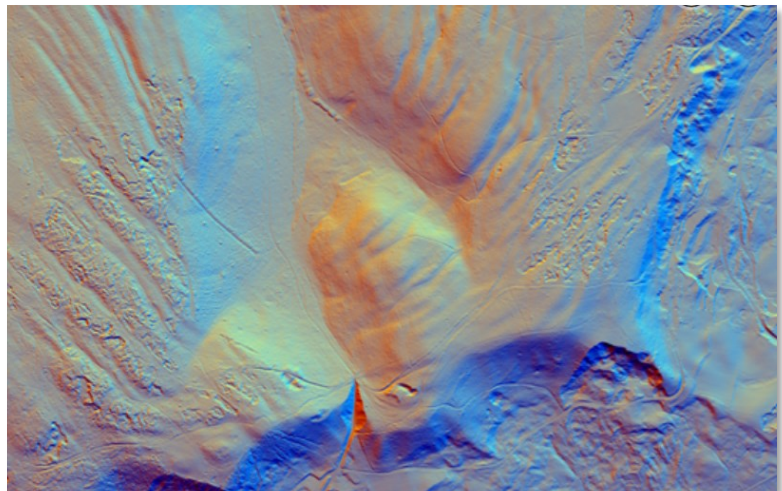
Anne Sassin (*SyAS Outreach Projects Manager*)

LiDAR Portal and groundtruthing

The [Surrey LiDAR Portal](#) is an online interactive citizen science map which includes various LiDAR datasets for all of Surrey, including the historic county, as well as historic maps and HER data to help in analysing the imagery.

LiDAR has enormous potential to uncover previously unknown archaeological features, and by helping map and interpret these sites online, volunteers can work to build a more complete story of the local landscape. Anyone is welcome to register for a free account, which will allow access to the interactive map. Volunteers who would like to be involved and help in digitising features should read the available tutorials and are encouraged to attend online training sessions (please contact us at outreach@surreyarchaeology.org.uk if you are interested, as we can discuss arranging a bespoke session).

Although no groundtruthing sessions are currently scheduled for the autumn/winter season, we will hopefully be able to provide some dates and venues soon. Please also contact us if you are interested in groundtruthing work.





Albury Park community test pitting

The 2024 season of test pitting at Albury Park wrapped up in September, which entailed 9 test pits, bringing the total number to 30 for the season. The pits continued to show where the concentrations of medieval and earlier Saxon pottery were within the park, not surprisingly with a concentration along the former N-S road, Dog Kennel Lane, but also interestingly indicated a strong Roman presence in the area north of the Tillingbourne.

Many thanks are due to the brilliant team involved (now over 50 volunteers in total), without whose hard work with both digging and finds processing the project would not be possible. Be sure to keep an eye out for a write-up of 2024's pits in the February edition of *Surrey's Past*; the dig will also feature in the community archaeology round-up talk at our March symposium at East Horsley (<https://www.surreyarchaeology.org.uk/content/annual-symposium-2025>). More details of further fieldwork at Albury will be available in due course.



The first Roman sherd of the dig (in test pit 41)



Careful cleaning of a chalk surface



A late medieval composite strap end, with fragments of fabric still within

Hatchlands geophysics

Early phases of an emerging community project at Hatchlands, run jointly between SyAS and the NT, will involve geophysical training (magnetometry, electrical resistance and GPR) and is set to take place between **Monday 21** and **Thursday 24 October**. This will be run as a training exercise, and no prior experience is needed. Places may be limited in the number of days per person, depending on interest. Those interested in taking part should contact Anne at outreach@surreyarchaeology.org.uk. Further details, including directions, will be provided in the week or two prior to the survey.





CFA 24 update

By Emma Corke

Cocks Farm Abinger (CFA24) began with ten students from the Austin Community College, Texas and their professor, Paul Lehman, joining us for a week. Our volunteers taught the students trowelling, finds processing, section drawing and trench etiquette as well as trying to introduce them to the entire history of the UK. Their trip ended with a landscape archaeology walk to the Research Centre where they were shown some star finds, given a talk on CBM and shown round the library.

The following weeks saw a return to our more familiar way of doing things with some very enthusiastic (British) students joining our usual keen and hard-working band of volunteers.

Four trenches were opened (T35-38) covering a total area of 835sqm – about twice as much as usual. Archaeology, as anticipated from the magnetometry, was sparse but exciting (in parts). Ts 37 and 38 (the southern-most) investigated further stretches of the familiar and very varied RB east-west boundary ditch. In both trenches a Romano-British (RB) ploughed field was again found to the south of the ditch, though in T38 it was almost entirely obscured by a scattered but abundant heap of ironstone, presumably dug from the ditch. Ephemeral remains of a ditch to the north may be related to a prehistoric ditch seen in other years.

Most of T35 (19x31sqm) and all of T36 contained nothing but tree-holes: all nine appeared to be prehistoric, the finds only being stone, struck and calcined flint and rarely a small sherd of probably Neolithic or Bronze Age pottery. All but one were on the sloping part of the field. There were also some undatable pits, several of which intercut, and a ditch overlying the intercutting pits, the majority of which had been lost to the plough and erosion.

The flat top of the hillock however was thick with archaeology. Much analysis of course remains to be done, but it is clear that we have the remains of a Middle/Late Neolithic landscape. There are two pits, one about 1m in diameter, the other 3.2 by 2.9m with a complicated and elaborate sequence. Close by were two roundhouses apparently of the same date as the larger pit, one about 8.5, one 4.5 in diameter, both double-walled, the larger with more than one phase. Other related features nearby were a four-poster and a curving fence.



Two Texans learning to draw posthole cross-profiles



Elvin Mullinger drawing a section of the large pit

An east-west fence or wall line of closely-placed posts near the north edge of T35 may well be RB.

An intriguing find was a number of burials of complete articulated birds. One was excavated and contained a mature domestic fowl together with some chicks and many eggs in a neat square pit. Original speculation that this might be an RB ritual offering was proved false while back-filling when metal detecting found another burial, this time accompanied by a metal leg-ring dating probably to about 1900. Presumably the birds died from some infection that meant that neither they nor their eggs could be eaten.

Finds included a fine Early Neolithic axe and other flint tools, Grooved and Peterborough Ware and a large quantity of magnetic highly burnt ironstone.

Many thanks as always to all our dedicated volunteers who patiently worked on some sometimes rather uninspiring tasks: the lack of RB finds and features may have been dull but tells us a lot about the RB landscape. There are far too many people to name, but I must mention Nikki Cowlard without whom I would sink under admin.



The Early Neolithic axehead *in situ*



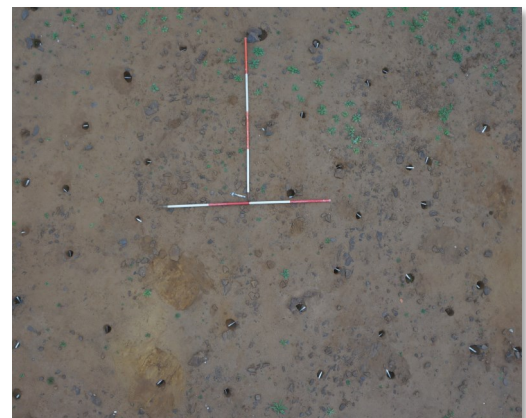
Starting to excavate the ditch in T38



Overhead of the two Neolithic pits and some associated postholes



The larger roundhouse (some lies outside the trench). The larger pit edge can be seen (top left), as can the possible RB fence or wall (on right)



The smaller roundhouse



Medieval Surrey – Surrey Local History Symposium

This year's Surrey Local History Symposium, run jointly with the Medieval Studies Forum and focused on Medieval Surrey, will take place on **Saturday 12 October** (9:55-16:15) at Surrey History Centre in Woking. The full programme is available on the [website](#), but will include the following talks:

Rob Briggs (Chair SAS Medieval Studies Forum), 'Insights from Early Medieval Charters: Farnham as a Case Study'

Dr Michael Shapland (University College London/Archaeology South-East), 'The Dragon's Hill: A Medieval Rock-Cut Shrine and Regional Assembly Site near Guildford'

Mike Page (Surrey County Archivist), 'Conflicted loyalties: researching Surrey's gentry in the Wars of the Roses'

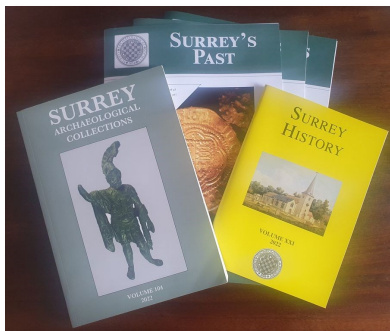
Dr David Stone (Head of History and Politics, Torquay Boys' Grammar School), 'Medieval Surrey through the lens of manorial accounts'

Madeline Hutchins (Chaldon History Group), 'Chaldon Court 1366: a Medieval Mystery'

Lucy Quinnell (Independent), 'The Steward's Tale: Resolving Rowhurst'

Coffee or tea are included; tickets £15 (£18 on the door). To book and for more info, please follow the link above to the event listing.

Thinking about joining and getting involved?



If you aren't yet a member of SyAS, now is the perfect time to join! In addition to three issues of *Surrey's Past* a year, the annual journal(s) *Surrey Archaeological Collections* and *Surrey History*, members have access to a wide range of fieldwork opportunities, research projects and special interest groups, many with their own programmes. To join (and see the full range of what is offered), please visit our [website](#). Some of the groups you might wish to join include:

Artefacts and Archives Research Group (AARG) – On-site processing of artefacts, with further work carried out at weekly meetings, including lithics and pottery; for more details on sessions and work available, visit the [AARG webpages](#).

Medieval Studies Forum – In-person and online talks with workshops and visits focused on the period from c.400-1600; for more details, visit the [MSF](#) webpage.

Prehistoric Group – In-person meetings, regular newsletter and study of collections in museums; for more details, visit the [PG](#) webpage.

Roman Studies Group – A varied programme which includes fieldwork, monthly lecture meetings, full-day seminars and day trips; for more details, visit the [RSG](#) webpage.



CBA SE Annual Conference

This year's annual CBA-SE conference on **Saturday 16 November** (10:00-17:00) will be a memorial event in honour of Dr Malcolm Lyne who sadly passed away last November. Malcolm was a leading Roman pottery specialist, but also had other research interests in the south-east, and the conference will reflect on his research work and interests.

The event will be run by the Sussex School of Archaeology and History in association with CBA-SE. The venue for the 'live' event will be Kings Church, Lewes, East Sussex, with an online zoom option. Tickets are priced £25 for the in-person conference fee, £20 for CBA-SE members, Sussex School USAS lecture series subscribers and full-time students; online viewing will be £15. The link for tickets is now available on [Eventbrite](#).

Confirmed speakers and their lecture titles/topics include:

Dr Steve Willis (University of Kent): 'Malcolm's Life and Contribution: a Vignette'

Anna Doherty (Archaeology South-East) who will speak about Malcolm's Roman pottery research work in the South-East

Chris Butler (CBAS): 'The Hassocks Roman and Saxon Cemetery and the Wickham Barn Roman Pottery Kilns'

Lilian Ladle (Bournemouth University): 'The South-East Dorset Black Burnished Ware Industry – Malcolm's Legacy'

Thomas Martin: 'Roman [pottery] forms in Saxon fabrics'

Dr Philip Smither (Portable Antiquities Scheme: PAS): 'Rutupine Reviver': Malcolm Lyne's impact on the Richborough Archive'

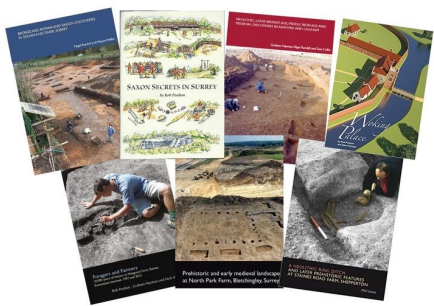
Professor Mike Fulford (University of Reading): 'Malcolm's Excavations at Pevensey Castle 1936 to 1964'

Dr Sam Moorhead (PAS): 'Finds of Carausian and Allectan coins from the Saxon Shore'

Dr Anthony Durham: 'Roman and Early Saxon Place Names around the Solent'

Arthur Franklin (Lewes Priory Trust): 'Malcolm and Lewes Priory'

Kevin Trott (Wessex Archaeology): 'Excavating Malcolm's Archives'



SCAU publications on ADS

A selection of Surrey County Archaeological Unit publications are now available for free online on the Archaeology Data Service. Monographs are available [here](#) and Occasional Papers [here](#). Hard copies of publications are still available to purchase from the Surrey History Centre and the Surrey Heritage Online Shop.



Research Committee Grants

The Research Committee would like to remind all members that grants are available for Surrey projects and are available to Society groups with no budget and to external groups with limited resources. Society excavations such as Abinger in 2024 and post-excavation for Ashted, Abinger and Flexford have been funded. Surveys, documentary research, training and scientific analyses are all suitable for consideration and have been supported by Society grants in recent years, such as work on the historic excavation at Lightwater and to enable a report on the more recent Hatch Furlong dig to commence. Scientific analyses are also specifically covered by funds from the Bierton-Slade bequest which has recently funded C14 dating for the Abinger excavation.

Applications are considered throughout the year and the Committee's decision is final. Details and an application form are available on the website or from the office.

Margary Award 2025

The Research Committee initiated a new approach to the Margary Award in 2024 with the following guidelines, and now invite submissions for 2025.

- i) The award is a recognition of a new contribution to the knowledge of the past of the historic county of Surrey.
- ii) The research or its demonstration should have taken place within the previous year, and not previously made public.
- iii) Any individual or group may enter provided there is no professional input.
- iv) Submissions for the award could take a variety of forms such as illustrations, Power-Point displays, videos, short reports and traditional displays, with physical evidence available to view at the Annual Symposium required. This need be no more than a digital photograph which could be used as part of a rolling PowerPoint during the day.
- v) Nominations should be received by the committee by **31 December 2024**, with completed entries submitted at least one month before the date of the Symposium.
- vi) The judging panel will be the choice of the Research Committee, and may still be formed by the Chair of the Research Committee, the President of the Society and an invited third party.
- vii) There will be one award of £300. There will be a runner-up if the number of entries justifies it.

This is an opportunity for community activities, youth groups and individuals to be creative in how they approach publicising their work. Nominations can be made at any time by contacting the Research Committee via info@surreyarchaeology.org.uk.



Rural Life Living Museum appeal

The Rural Life Museum in Tilford needs help to raise £150,000 by the end of October or there is a very strong chance the Museum will be forced to close. The collection was started by Madge and Henry Jackson in 1968 who opened their back garden to the public in 1973. The open air museum has about 20 buildings and a collection of more than 40,000 agricultural artefacts which document historic jobs, crafts and trades. More about the appeal can be read [here](#), and the fundraising link [here](#).



Surrey Industrial History Group lecture series

SIHG hold regular short talks at Leatherhead and via Zoom between September and April which are free to SIHG members (annual membership costs £10, but is free until the end of 2024; contact membership@sihg.org.uk).

Talks can be found [online](#), starting with Robert Mee on 'Bradshaw's and an Early Railway Tour' on Zoom on **Thursday 10 October** at 19:15. See the website for the full programme.

Roman Studies Group 2024-2025 lectures

RSG talks are generally held on the first Tuesday of the month on Zoom, beginning at 19:30. Although free, talks are limited to RSG members. If you are a SyAS member you can join RSG for free through the [membership page](#), follow instructions to join RSG. Any queries should be directed to the secretary at romanstudiesgroup@btinternet.com.

Talks can be found [online](#), including Professor Ian Freestone on 'The Long Roman Glass Industry' on **Tuesday 5 November**. See the website for the full programme.

Also, save the date for the latest in the series of bi-annual RSG conferences, 'Shining a Light on Roman Rural Settlement in South-East England', on **Sunday 8 June 2025**. This will be a hybrid meeting at Ashted Peace Memorial Hall (and held online), run in conjunction with the Sussex School of Archaeology. A full programme and further details will be available in due course, as speakers confirm attendance and talk titles.



For more information on opportunities in your local region, be sure to follow SCAU (education.scau@surreycc.gov.uk and [@diggingsurreyspast](#)), as well as the Council for British Archaeology South-East (www.cbasouth-east.org and [@CBASouthEast](#)).