



# Surrey Archaeological Society

No 44

August 2024

## E-newsletter

Welcome to the Society's August e-newsletter, which highlights a few of the various events – conferences, lectures, training sessions, news items, etc – which we hope to be of interest to our members. Although general queries should continue to be directed to [info@surreyarchaeology.org.uk](mailto:info@surreyarchaeology.org.uk), those interested in volunteer opportunities or general outreach can contact me at [outreach@surreyarchaeology.org.uk](mailto:outreach@surreyarchaeology.org.uk). Please also keep up-to-date via the website and social media ([@surreyarch](https://www.instagram.com/surreyarchaeology)) for group and event updates.

Anne Sassin (*SyAS Outreach Projects Manager*)

### Roman Studies Group 2024-2025 lectures

This year's RSG lecture series is set to resume on **Tuesday 1 October** with its AGM, followed by a talk from David Millum on 'Excavations at Bridge Farm, East Sussex'. The Culver Project focuses on this fascinating Romano-British settlement in the Ouse Valley, which RSG members visited this summer. A short summary about the site and its recent excavations can be found as an attachment on the [events page](#).

RSG talks are generally held on the first Tuesday of the month on Zoom, beginning at 19:30. Although free, talks are limited to RSG members. If you are a SyAS member you can join RSG for free through the [membership page](#), follow instructions to join RSG. Any queries should be directed to the secretary at [romanstudiesgroup@btinternet.com](mailto:romanstudiesgroup@btinternet.com).

Other upcoming lectures include:

**Tuesday 5 November** – Professor Ian Freestone on 'The Long Roman Glass Industry'

**Tuesday 3 December** – December Chris Gibson on 'The latest Roman road fieldwork around Ewhurst'

**Tuesday 4 February** – Emma Corke on 'Discoveries at Cocks Farm Abinger 2024'

**Tuesday 4 March** – Lilian Ladle on 'The Rise and Decline of Druce Farm Roman Villa (AD60-650)'

Also, save the date for the latest in the series of bi-annual RSG conferences, 'Shining a Light on Roman Rural Settlement in South-East England', on **Sunday 8 June 2025**. This will be a hybrid meeting at Ashted Peace Memorial Hall (and held online), run in conjunction with the Sussex School of Archaeology. A full programme and further details will be available in due course, as speakers confirm attendance and talk titles.





## Albury Park community test pitting

The final week of test pitting at the deserted medieval settlement at Albury Park will be from **Monday 9 to Thursday 12 September**. This will shift focus to a new area within the park and move to the other/north side of the Tillingbourne.

Volunteers are welcome for both finds and digging; no prior experience needed. If interested in taking part and wanting to be added to the project mailing list, please contact our community archaeologist Anne at [outreach@surreyarchaeology.org.uk](mailto:outreach@surreyarchaeology.org.uk).



## Archaeology Volunteering in Surrey with the National Trust



HART, or the 'National Trust's Heritage and Archaeology Rangers Team', is a volunteer initiative set up to help improve the Trust's understanding of the archaeological sites in their care. It is a scheme involving teams of volunteers undertaking fieldwork and collecting information about the current condition of important sites, as well as encouraging further research and projects.

The NT cares for over 95,000 archaeological sites which are recorded in the [National Trust Historic Buildings Sites and Monuments Record](#) (HBSMR). They range from Neolithic enclosures and flint mines through to Cold War rocket testing sites. Though they have mapped these sites through research, the challenge is protecting and managing them, thus the need for HART in Surrey, starting with a regional focus on Hatchlands and Polesden.



A HART training day will be taking place on **Thursday 19 September** at Polesden Lacey (with the view of also covering Hatchlands following the training) where you will be working alongside National Trust volunteers. If you are interested in taking part in HART in Surrey, please email [james.brown@nationaltrust.org.uk](mailto:james.brown@nationaltrust.org.uk).

## Hatchlands geophysics

Early phases of an emerging community project at Hatchlands, run jointly between SyAS and the NT, will involve geophysical training (magnetometry, electrical resistance and GPR) and is set to take place between **Monday 21 and Thursday 24 October**. No prior experience is needed, and those who are interested in taking part should contact Anne at [outreach@surreyarchaeology.org.uk](mailto:outreach@surreyarchaeology.org.uk). Further details will be provided in due course.

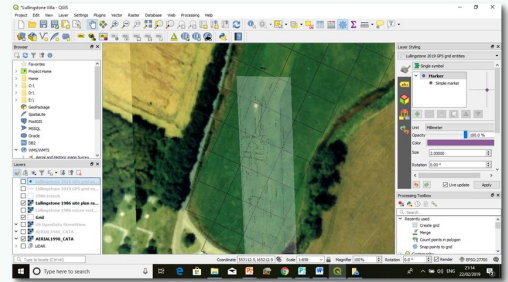
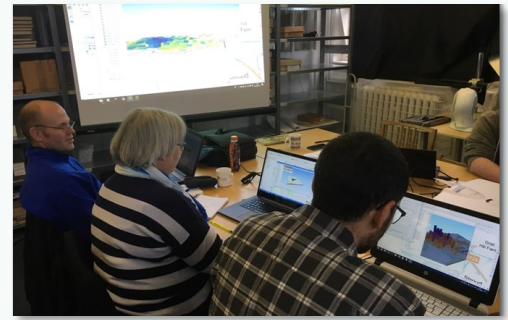


## QGIS training

The Society will be running QGIS workshops at its Research Centre at Abinger Hammer in September: a one-day introduction session from 10:00-15:00 on **Saturday 14 September** and a follow-up advanced course on **Saturday 28 September**.

Led by Simon Miles, these courses will provide a practical overview to the uses of QGIS (a free and open source GIS application) for archaeological purposes. They are ideal for those wishing to refresh their QGIS skills or wanting to get an insight into what QGIS can offer.

The course is free, but spaces are limited. Please email [outreach@surreyarchaeology.org.uk](mailto:outreach@surreyarchaeology.org.uk) to reserve a spot.

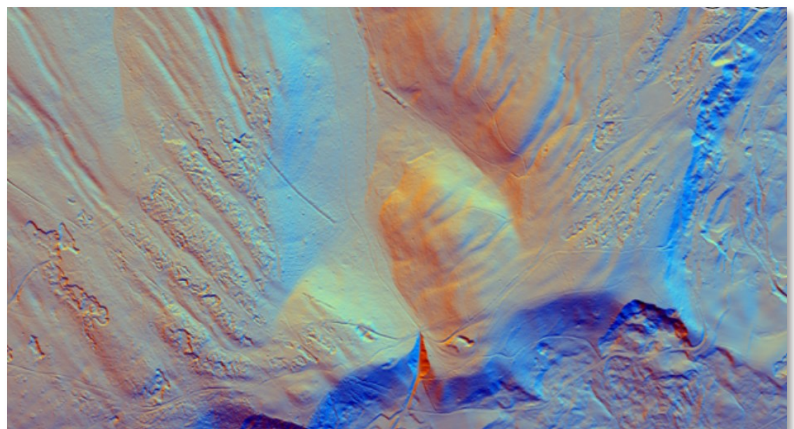


## LiDAR Portal and groundtruthing

The [Surrey LiDAR Portal](#) is an online interactive citizen science map which includes various LiDAR datasets for all of Surrey, including the historic county, as well as historic maps and HER data to help in analysing the imagery.

LiDAR has enormous potential to uncover previously unknown archaeological features, and by helping map and interpret these sites online, volunteers can work to build a more complete story of the local landscape. Anyone is welcome to register for a free account, which will allow access to the interactive map. Volunteers who would like to be involved and help in digitising features should read the available tutorials and are encouraged to attend online training sessions (please contact us at [outreach@surreyarchaeology.org.uk](mailto:outreach@surreyarchaeology.org.uk) if you are interested, as we can discuss arranging a bespoke session).

Although no groundtruthing sessions are currently scheduled for the autumn/winter season, we will hopefully be able to provide some dates and venues soon.





## Medieval Surrey – Surrey Local History Symposium

This year's Surrey Local History Symposium, run jointly with the Medieval Studies Forum and focused on Medieval Surrey, will take place on **Saturday 12 October** (9:55-16:15) at Surrey History Centre in Woking. The full programme is available on the [website](#), but will include the following talks:

Rob Briggs (Chair SAS Medieval Studies Forum), 'Insights from Early Medieval Charters: Farnham as a Case Study'

Dr Michael Shapland (University College London/Archaeology South-East), 'The Dragon's Hill: A Medieval Rock-Cut Shrine and Regional Assembly Site near Guildford'

Mike Page (Surrey County Archivist), 'Conflicted loyalties: researching Surrey's gentry in the Wars of the Roses'

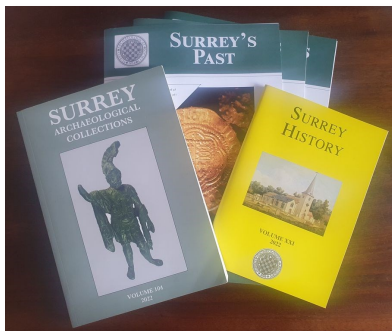
Dr David Stone (Head of History and Politics, Torquay Boys' Grammar School), 'Medieval Surrey through the lens of manorial accounts'

Madeline Hutchins (Chaldon History Group), 'Chaldon Court 1366: a Medieval Mystery'

Lucy Quinnell (Independent), 'The Steward's Tale: Resolving Rowhurst'

Coffee or tea are included; tickets £15 (£18 on the door). To book and for more info, please follow the link above to the event listing.

## Thinking about joining and getting involved?



If you aren't yet a member of SyAS, now is the perfect time to join! In addition to three issues of *Surrey's Past* a year, the annual journal(s) *Surrey Archaeological Collections* and *Surrey History*, members have access to a wide range of fieldwork opportunities, research projects and special interest groups, many with their own programmes. To join (and see the full range of what is offered), please visit our [website](#). Some of the groups you might wish to join include:

Artefacts and Archives Research Group (AARG) – On-site processing of artefacts, with further work carried out at weekly meetings, including lithics and pottery; for more details on sessions and work available, visit the [AARG webpages](#).

Medieval Studies Forum – In-person and online talks with workshops and visits focused on the period from c.400-1600; for more details, visit the [MSF](#) webpage.

Prehistoric Group – In-person meetings, regular newsletter and study of collections in museums; for more details, visit the [PG](#) webpage.

Roman Studies Group – A varied programme which includes fieldwork, monthly lecture meetings, full-day seminars and day trips; for more details, visit the [RSG](#) webpage.



## CBA SE Annual Conference

This year's annual CBA-SE conference on **Saturday 16 November** (10:00-17:00) will be a memorial event in honour of Dr Malcolm Lyne who sadly passed away last November. Malcolm was a leading Roman pottery specialist, but also had other research interests in the south-east, and the conference will reflect on his research work and interests.

The event will be run by the Sussex School of Archaeology and History in association with CBA-SE. The venue for the 'live' event will be Kings Church, Lewes, East Sussex, with an online zoom option. Tickets are priced £25 for the in-person conference fee, £20 for CBA-SE members, Sussex School USAS lecture series subscribers and full-time students; online viewing will be £15. The link for tickets is now available on [Eventbrite](#).

Confirmed speakers and their lecture titles/topics include:

Dr Steve Willis (University of Kent): 'Malcolm's Life and Contribution: a Vignette'

Anna Doherty (Archaeology South-East) who will speak about Malcolm's Roman pottery research work in the South-East

Chris Butler (CBAS): 'The Hassocks Roman and Saxon Cemetery and the Wickham Barn Roman Pottery Kilns'

Lilian Ladle (Bournemouth University): 'The South-East Dorset Black Burnished Ware Industry – Malcolm's Legacy'

Thomas Martin: 'Roman [pottery] forms in Saxon fabrics'

Dr Philip Smither (Portable Antiquities Scheme: PAS): 'Rutupine Reviver': Malcolm Lyne's impact on the Richborough Archive'

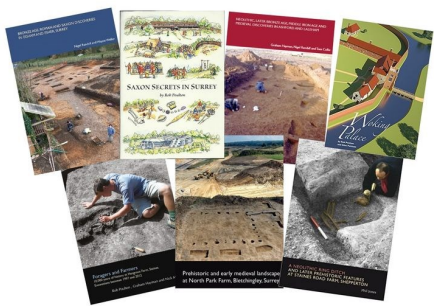
Professor Mike Fulford (University of Reading): 'Malcolm's Excavations at Pevensey Castle 1936 to 1964'

Dr Sam Moorhead (PAS): 'Finds of Carausian and Allectan coins from the Saxon Shore'

Dr Anthony Durham: 'Roman and Early Saxon Place Names around the Solent'

Arthur Franklin (Lewes Priory Trust): 'Malcolm and Lewes Priory'

Kevin Trott (Wessex Archaeology): 'Excavating Malcolm's Archives'



## SCAU publications on ADS

A selection of Surrey County Archaeological Unit publications are now available for free online on the Archaeology Data Service. Monographs are available [here](#) and Occasional Papers [here](#). Hard copies of publications are still available to purchase from the Surrey History Centre and the Surrey Heritage Online Shop.



## Research Committee Grants

The Research Committee would like to remind all members that grants are available for Surrey projects and are available to Society groups with no budget and to external groups with limited resources. Society excavations such as Abinger in 2024 and post-excavation for Ashted, Abinger and Flexford have been funded. Surveys, documentary research, training and scientific analyses are all suitable for consideration and have been supported by Society grants in recent years, such as work on the historic excavation at Lightwater and to enable a report on the more recent Hatch Furlong dig to commence. Scientific analyses are also specifically covered by funds from the Bierton-Slade bequest which has recently funded C14 dating for the Abinger excavation.

Applications are considered throughout the year and the Committee's decision is final. Details and an application form are available on the website or from the office.

## Margary Award 2025

The Research Committee initiated a new approach to the Margary Award in 2024 with the following guidelines, and now invite submissions for 2025.

- i) The award is a recognition of a new contribution to the knowledge of the past of the historic county of Surrey.
- ii) The research or its demonstration should have taken place within the previous year, and not previously made public.
- iii) Any individual or group may enter provided there is no professional input.
- iv) Submissions for the award could take a variety of forms such as illustrations, Power-Point displays, videos, short reports and traditional displays, with physical evidence available to view at the Annual Symposium required. This need be no more than a digital photograph which could be used as part of a rolling PowerPoint during the day.
- v) Nominations should be received by the committee by **31 December 2024**, with completed entries submitted at least one month before the date of the Symposium.
- vi) The judging panel will be the choice of the Research Committee, and may still be formed by the Chair of the Research Committee, the President of the Society and an invited third party.
- vii) There will be one award of £300. There will be a runner-up if the number of entries justifies it.

This is an opportunity for community activities, youth groups and individuals to be creative in how they approach publicising their work. Nominations can be made at any time by contacting the Research Committee via [info@surreyarchaeology.org.uk](mailto:info@surreyarchaeology.org.uk).



## Recent items acquired by the Library

In June, the following [new items](#) were acquired by the Library. To view other [recent acquisitions](#) or browse the online Library [catalogue](#), please visit the website. The Margary Room at Abinger is open to everyone (including non-members) on Mondays and Tuesdays (10:00-16:00). Please check before visiting to ensure we will be open.

## Rural Life Living Museum appeal

The Rural Life Museum in Tilford needs help to raise £150,000 by the end of October or there is a very strong chance the Museum will be forced to close. The collection was started by Madge and Henry Jackson in 1968 who opened their back garden to the public in 1973. The open air museum has about 20 buildings and a collection of more than 40,000 agricultural artefacts which document historic jobs, crafts and trades. More about the appeal can be read [here](#), and the fundraising link [here](#).



## Heritage Open Days

The Society will hold a Heritage Open Day at their Research Centre and Library in Abinger Hammer on **Sunday 15 September** (10:30-15:00). The Lithics Group will be in attendance studying and cataloguing lithics collections (mainly flint items) and there will be an opportunity to explore the Society Library.

Please check other local [HOD listings](#) to see what exciting local events are in your area.



## Surrey Industrial History Group lecture series

SIHG hold regular short talks at Leatherhead and via Zoom between September and April which are free to SIHG members (annual membership costs £10, but is free until the end of 2024; contact [membership@sihg.org.uk](mailto:membership@sihg.org.uk)).

Talks can be found [online](#), starting with Robert Mee on 'Bradshaw's and an Early Railway Tour' on Zoom on **Thursday 10 October** at 19:15. See the website for the full programme.

For more information on opportunities in your local region, be sure to follow SCAU ([education.scau@surreycc.gov.uk](mailto:education.scau@surreycc.gov.uk) and [@diggingsurreyspast](#)), as well as the Council for British Archaeology South-East ([www.cbasmouth-east.org](http://www.cbasmouth-east.org) and [@CBASouthEast](#)).