



Surrey Archaeological Society

No 12 December 2021

E-newsletter

Welcome to the Society's December e-newsletter, which highlights a few of the various events – conferences, lectures, training sessions, news items, etc – which we hope to be of interest to our members. Although general queries should continue to be directed to Hannah (info@surreyarchaeology.org.uk), those interested in volunteer opportunities or general outreach can contact me at outreach@surreyarchaeology.org.uk. Please also keep up-to-date via the website and social media ([@surreyarch](https://twitter.com/surreyarch)) for group and event updates.

Anne Sassin (*SyAS Outreach Projects Manager*)



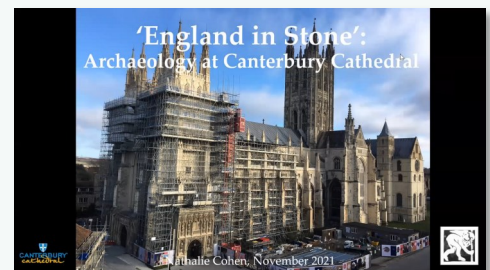
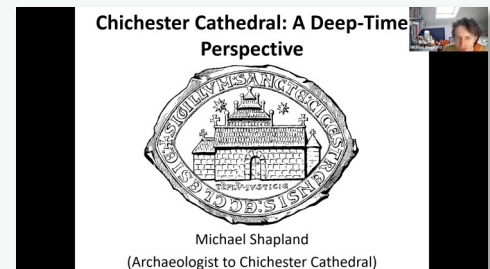
Icehouses on the Surrey HER

The belated Historic Environment Record blog '[Cool for the Summer: Icehouses on the Surrey HER](#)' by former HER Assistant Seb Jones, originally intended for summer 2021, provides interesting insights into the history of these largely 17th-19th century structures, including some of the 100 examples currently recorded on the HER database.

SHERF 2021 videos

Many thanks to all those who helped with this year's annual SHERF conference on 27 November, themed on the 'Archaeology of the Church' and run jointly with CBA-SE. Although held once again online, the day was a considerable success and highlighted several innovative and interesting projects resulting from recent fieldwork and research around the South-East.

Two of the talks – Michael Shapland (Archaeology South-East) on '[Chichester Cathedral: A Deep-Time Perspective](#)' and National Trust's Nathalie Cohen on "['England in Stone': Archaeology at Canterbury Cathedral](#)" – were recorded with the agreement of the speakers and are now available to view on CBA-SE's YouTube Channel. Although not a recording from the conference's actual talk, Alistair Douglas (Pre-Construct Archaeology) has previously been recorded on his '[Story of Bermondsey Abbey from Saxon Minster to the Dissolution](#)', which is available on PCA's channel.





PAS posts from the FLO

Surrey's Finds Liaison Officer, Dr Simon Maslin, shares more detailed insight into a copper-alloy Ptolemaic coin from Leatherhead (object [SUR-4EA551](#)) on the [PAS Surrey blog](#), an exotic find dating to 285-246 BC, whose lack of archaeological context makes it difficult to say for certain whether it is a modern deposition or contemporary import.



New data on Surrey LiDAR Portal!

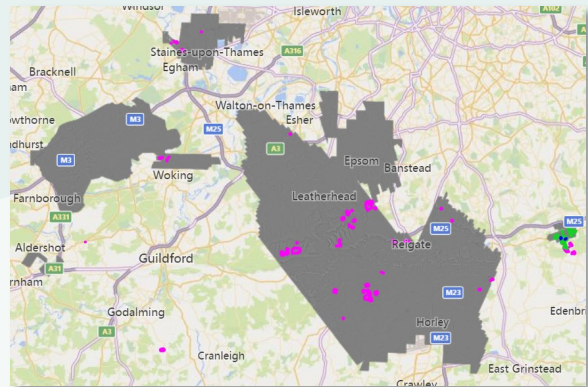
The Surrey LiDAR Portal (surreylidar.org.uk), an interactive citizen science tool which makes available imagery from the county's LiDAR, has just had a new high resolution 0.5m dataset added: the 95km² area of Surrey Heath Borough. Thanks to the kind and generous bequest of Mary Slade, who would have been greatly interested at this opportunity to study the history and archaeology of Surrey, this bespoke data now enhances the 0.5m coverage on the Portal.

LiDAR has enormous potential to uncover previously unknown archaeological features, and by helping map and interpret these potential sites online, volunteers can work to build a more complete story of the local landscape.

Anyone is welcome to register for a free account, which will allow access to the interactive map. Volunteers who would like to be more involved

in the citizen science process itself and help in digitising potential features should read the available tutorials and are encouraged to attend online training sessions.

For those who missed the initial online tutorial 'Using the Surrey LiDAR Portal' but are interested in an introductory session, please contact the project team directly. Anyone who would like to be involved in the training sessions or other work related to the LiDAR project, including fieldwork such as 'groundtruthing' and landscape survey, please e-mail outreach@surreyarchaeology.org.uk.



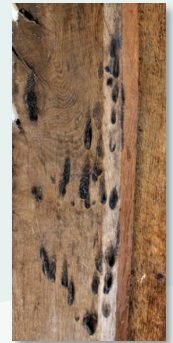


Surrey Heritage Marvel of the Month

Surrey Heritage's [December Marvel of the Month](#) features illustrious author Jane Austen and the Surrey sites and landscapes which provided her with literary inspiration, including works such as *Emma* and the unfinished novel *The Watsons*.

Burn Marks in Historic Buildings

Following the special lecture 'The Folklore and Archaeology of Historic Buildings' given to the SyAS Medieval Studies Forum in December, building archaeologist Dr James Wright is providing a free Christmas lecture on **Thursday 30 December** at 17:00. Part of a new winter series of Triskele online talks, this lecture on 'Burn marks in historic buildings' addresses whether they are the result of careless accidents or deliberate rituals. To register for this event, visit the [Eventbrite](#) page for tickets.



Library journals available for re-homing

Over the pandemic, the library has been rationalising its journal stock to create storage space for new items. No journal has become unavailable, but some will only be online now, not in hard copy. This means we are looking to rehome withdrawn journals and have created a list of available journals, which can be viewed on the [Society's website](#).

If you are interested in obtaining any of these journals please contact Hannah Jeffery on librarian@surreyarchaeology.org.uk or 01306 731275.

Folklore of Surrey



A new book, *Folklore of Surrey* by Matthew Alexander, describes the working-class traditions of village and market towns in 'Old Surrey', and includes popular themes such as ghosts, tunnels and treasure, witches, folk medicine, sayings, calendar customs and even wife-swapping. The book is rich in local history material, especially those occasions when tradition was made the flash-point for conflict, as in the Guildford Guy Riots, and is accurate, comprehensive and relevant, as well as a fascinating book to read.

Price £12.99, available from Guildford Museum, Surrey History Centre or from the Society by post (with a cheque made payable to 'Surrey Archaeological Society', Hackhurst Lane, Abinger Hammer RH5 6SE).



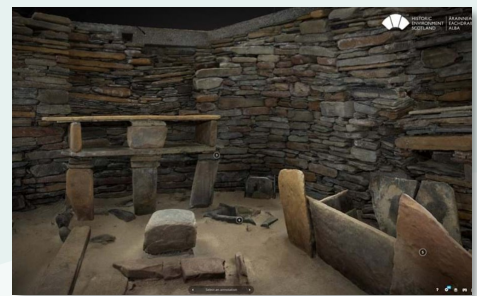
ASE's Medieval Garden blog and videos

Archaeology South-East's Archaeologist Lorna Webb has produced a new digital outreach project based on medieval plants grown in her allotment, which has been turned into a mock monastic medieval garden. Using medieval manuscripts and archaeobotanical evidence from some of ASE's recent excavations, Lorna has produced a series of

blog posts and accompanying videos, which can be found on the main [blog page](#).

New digital model of Skara Brae

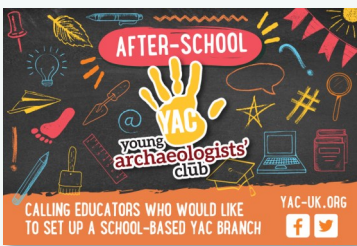
A new 3D scan from Historic Environment Scotland) investigates climate change impacts at World Heritage sites in Orkney, including as Skara Brae, where a new model, available to view on Sketchfab, allows virtual visitors an immersive digital experience of the Neolithic settlement. For more, visit the [HES newspaper](#) or view other HES models on [Sketchfab](#).



CBA Wessex special lecture by Martin Millett

On **Tuesday 18 January**, starting at 19:30, CBA Wessex's AGM will conclude with a presentation by Professor Martin Millett on 'Then and Now: reflections on the changing shape of archaeology and the role of the volunteer'. This lecture is free and open to non-members, but must be booked via their [website](#).

New After-School YAC Club



YAC (Young Archaeologists' Club) CBA has just announced the launch of their brand-new After-School YAC Club, a club for school children from Years 3-11 to be taught in a school setting. After-School Clubs will receive the same support as affiliate branches, including resources to help support teachers deliver engaging club sessions. Clubs will also have access to YAC branding, training and member benefits for pupils. To find out more, visit their [website](#).

For more information on opportunities in your local region, be sure to follow SCAU (education.scau@surreycc.gov.uk and [@diggingsurreypast](#)), as well as the Council for British Archaeology South-East (www.cbасouth-east.org and [@CBASouthEast](#)).