



SURREY ARCHAEOLOGICAL SOCIETY
CASTLE ARCH, GUILDFORD GU1 3SX
Guildford 32454

Bulletin

Number 263

February/March 1992

COUNCIL NEWS

Annual General Meeting

At the Annual General Meeting held at Carew Manor on 24th November, Mr Dennis Turner was re-elected President of the Society. Miss Lesley Ketteringham was elected as an Honorary Member in recognition of her outstanding services to the Society.

Mr P J Gray, Mr H G Knowles, Mr R F Muir, Mrs P C Nicolaysen and Mr D M Sturley were elected to Council.

The retiring members, Mr J Boulton, Dr G J Dawson, Ms J English, Mr D J Field, Dr R A Higgins and Mrs E A Stazicker were thanked for their services during their four-year term.

The meeting was preceded by guided tours of the building and followed by an illustrated talk on the history of Carew Manor, given by Mr D Cluett and Mr J Phillips.

Surrey Pride of Place Award

As reported in Bulletin 262, the Society's work at the medieval moated site at South Park Farm, Graywood, recently won an award in the Surrey Pride of Place competition. This event was run by Surrey County Council and sponsored by Toshiba, to help develop projects which improve the environment of Surrey. The President attended the award ceremony at County Hall, Kingston and received a cheque for £400 to help purchase a tool store/shelter for the site.



The President, Mr D J Turner, and Mr J N Hampton, receiving the certificate for the Pride of Place Award from Mr S Brigstocke, Chairman of the County Council and Mr H Izumi of Toshiba (UK) Ltd.

Local Secretaries

The President chaired a meeting of Local Secretaries from the western side of the county at Guildford during November which the Honorary Secretaries, David and Audrey Graham, and the County Archaeologist, Dr David Bird, also attended.

The aim of the meeting was to explore ways in which the Society, through its network of local secretaries, could strengthen its role in protecting the archaeological and historical heritage of the county and, also, complement the work of the expanding archaeology and historic landscapes teams of the SCC Environmental Division.

As reported in Bulletin 262, SCC is establishing a computer-based Sites and Monuments Record for Surrey in response to PPG Note 16. David Bird acknowledged that the information so far recorded was by no means complete and that locally-based information was essential for its success. He confirmed that the division received lists of all planning applications, and those relating to large developments and those in known sensitive areas were checked against their records. But it was stressed that this was no substitute for local knowledge and the instance was cited where a seemingly innocuous application for a garage extension proved to be on the site of a Scheduled Ancient Monument.

Discussion followed on ways in which the role of Local Secretaries might be more relevant and usefully integrated with the work of the Society's Standing Committee and SCC archaeological division. David Graham said it was the Society's intention to provide local secretaries with a basic "kit" providing guidelines on what might be done and to whom information should be passed.

It was suggested that local secretaries should try to make it known that they are interested in any known or suspected discoveries of archaeological material, perhaps by a note in local or parish magazines. David Bird agreed to provide forms to enable information to be included in the SMR to be passed to him in a simple and acceptable format.

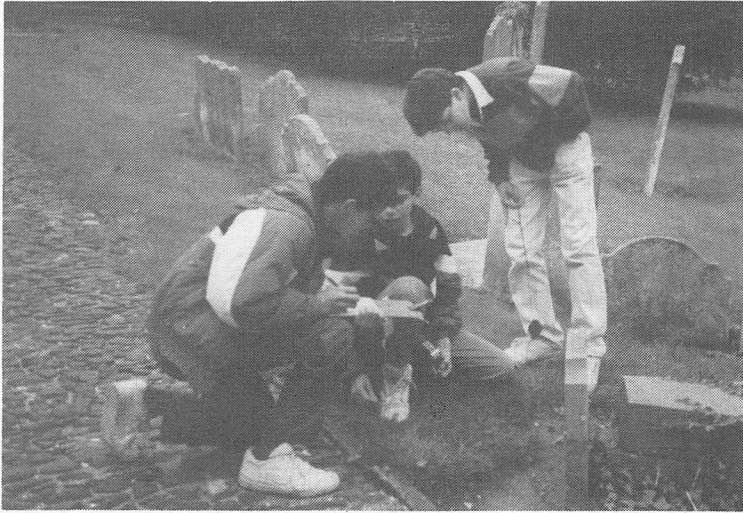
It was agreed that the exchange of views had been useful and a meeting of local secretaries in the eastern half of the County has been arranged in the New Year.

Surrey Young Archaeologists' Club

The Surrey Young Archaeologists' Club welcomes a new Club Organiser appointed in October. Christine Hardman is married with children of her own, and has considerable teaching experience including a spell as Schools' Liaison Officer with the Aldershot Military Museum. She has a degree in Prehistory and Archaeology from the University of Sheffield.

Christine has already begun to work with Sue Roggero to develop the Club's programme for next year and we can now look forward to the expansion of the Club's activities which have been under consideration for some time.

A number of members have recently taken part in a session entitled "Down among the Deadmen" — recording gravestones in St Mary's Churchyard (Guildford) and discovering what can be learnt from them.



ARCHAEOLOGICAL RESEARCH COMMITTEE

Annual Symposium: 15th February 1992 at the Christian Community Centre, Dorking. Lectures include the 1991 Guildford Castle Excavations; the Society's plans and work at South Park Moated site; the Reigate Coin Hoard; recent work by the DBRG and the County Archaeological Unit and an up-date on the Historic Landscape project.

Mrs Malyon of Esher wrote of the 1991 Symposium "I always look forward to the event — it cheers up February ... very informative and varied." So — apply now to Susan Janaway at Castle Arch. Tickets £2, or £2.50 on the day. Full details were circulated with Bulletin 262.

LECTURE AND SYMPOSIA COMMITTEE

The Committee has finalised details of the 1992 mini series of lectures on Aspects of Saxon Surrey to be held at the Christian Community Centre, Dorking at 7,30 pm for 8 pm , as follows:-

8 April	The Anglo-Saxons: an Historical Introduction	Paul Hodges
15 April	Saxon Sculpture and Illuminated Manuscripts	Elizabeth Eames
22 April	Saxon Buildings in Surrey	Derek Renn
6 May	Saxon Coins	Stewart Lyon
13 May	Cemeteries and Society	Rob Poulton
26 April	Field Visit	

In addition the Visit Committee has been invited to organise a field visit to supplement the series, on Sunday 26 April. Details will be available at the early lectures in the series.

Fees (excluding Field Trip): £10.00 for the Series or £2.50 for a single lecture. Application forms accompany this Bulletin.

VISITS COMMITTEE

The Committee is organising the following visits during 1992 on behalf of members. Please support them.

Thursday	April 23rd	Charterhouse and Clerkenwell	arr. J Carter
Saturday	May 9th-15th	Romanesque Normandy	arr. D Turner
Thursday	June 18th	Dorchester	arr. A Gillies
Saturday	July 18th	Dover	arr. R Butler
Tuesday	August 25th	West Wycombe	arr. J Carter
Thursday	September 3rd	Ashtead	arr. A Gillies
TBA	October	To be arranged	

SAS VISIT to CHARTERHOUSE & THE DRAPERS' HALL

Thursday 23rd April 1992

arranged by Josephine Carter (Tel: 0483 505502)

Party limited to 25. Priority to members of the Society.

10.45 am Assemble at the Charterhouse in Charterhouse Square EC1 Nearest tube station: Barbican. Our Vice-President, Mr E E Harrison MA FSA, has invited us for a tour of the building, home of the school before its removal to Godalming in 1872.

2.00 pm Meet at the Drapers' Hall, Throgmorton Avenue, 27 Throgmorton Street. From Bank Station take the exit signposted Threadneedle Street. Turn left into Bartholomew Lane & right at T junction into Throgmorton Street. Throgmorton Avenue is through iron gates on the left.

Interesting places nearby which may be visited individually by members are: Church of St Bartholomew the Great, which is open until 4.30pm; St John's Gate, near Smithfield Market, the Priory of the Knights of the Hospital of St John of Jerusalem. The crypt and museum may be open.

For travel to London, members having Network or Senior Rail Cards may obtain reductions for tickets purchased after 10 am, such as Capital Cards which allow travel on trains, tubes and buses.

Senior Citizens may have a discount on a day return when the outward train does not arrive in London before 10 am. Then they can obtain each Underground ticket for 60p after 9.30 am.

Tickets: Members £5 Non-members £6 Students £1.50 to include entrances, donations and administration.

SURREY INDUSTRIAL HISTORY GROUP

Byfleet Mill. The Mill stands on the site of a Domesday Cornmill, and has a long history. It was a paper mill in the second half of the 17th century and was visited by John Evelyn, who described the method of making paper there in his Diary. In the 18th century it became an iron and brass mill associated with the Bristol Company of Wiremakers. Subsequently it reverted to corn milling till about 1930.

The building is now occupied by a firm of architects, the MacDonald Partnership, which is undertaking sympathetic restoration work. In the course of this work various features were revealed which members of SIHG examined at the request of County Archaeologist, David Bird. A report of their findings has been deposited at Castle arch.

HISTORIC COUNTRYSIDE GROUP

David Bird

At the beginning of October representatives of many different 'countryside' organisations in Surrey, including members of this Society, met in Guildford for the first annual meeting to review the Surrey Countryside Action Plan. This Plan was developed over about the last three years by a number of Topic Groups working under the aegis of the County Planning Department. One of the topics under consideration was the Historic Environment.

The Action Plan called for the establishment of working groups to seek to implement the work outlined in the Plan, and a Historic Countryside Group has therefore been set up. It now has members from both County and District Councils, from English Heritage and from the Society, which is well represented.

The Action Plan calls for the Group to concern itself particularly with five main areas. These are:

Survey and record: there is a clear need for much more survey work on the historic landscape so that this can be incorporated into the Sites and Monuments Record as a basis for further action. The group is building on the experience of the Society's Historic Landscapes Project and seeking to extend this work into other areas of the County.

Policy: the new information can be used as a basis for the identification of those elements of the historic landscape which it is desirable to protect. To do this new policies will need to be developed, as already suggested in the draft Structure Plan. The County Council intends to set up, in conjunction with other relevant bodies, a Heritage Strategy, and policies for the better protection of areas of the historic landscape. A major problem in this work will be the definition of 'historic landscape' and the Group is devoting particular attention to this point.

Management of historic features and landscapes: we continue to lose elements of the historic landscape through neglect and inappropriate land use. This often occurs because the owner or tenant is unaware of the features in question. Positive management should therefore be encouraged, and again historic landscape survey work is needed to provide a basis. The Group is considering various ways in which proper management can be encouraged.

Voluntary involvement: it will be obvious that resources for the work outlined above will never be adequate and therefore much will rely on the work of volunteers. The Society is of course well placed, and the Group is particularly keen, to encourage more voluntary work in historic landscape work, which is ideally suited to amateur archaeologists and local historians.

Education and interpretation: it is of course very important that the results of the work are disseminated to as wide an audience as possible. The Action Plan calls for the development of much more interpretation of historic sites and the Group is trying to find ways to make this happen. It will be obvious that greater publicity should generate greater interest and therefore hopefully more volunteers and a greater awareness of the historic landscape among those responsible for looking after the land.

WEALDEN IRON RESEARCH GROUP

Tebbut Research Fund. This fund was established as a tribute to the life and work of the late C F Tebbut, OBE, FSA, and applications are invited. from individuals and groups, for grants towards research into the Wealden Iron Industry.

It is anticipated that approximately £200 will be available from the fund and anyone interested should write a suitable letter of application giving details of themselves together with relevant information concerning the research envisaged.

Details should be sent for the consideration of the Panel, not later than 31st March 1992 to: Mrs Sheila Broomfield, Hon Sec WIRG, 8 Woodview Crescent, Hildenborough, Tonbridge TN11 9HD.

NOTES

Neolithic Axe

Mary Saaler

The East Surrey Museum has recently received a donation of a polished axe (155 mm x 65 mm x 335 mm) which was found in 1918-20 by Mr P Comber of Lingfield, while he was digging a post-hole "in marshy ground on the east side of Lingfield Station". It was then taken to the British Museum where the authorities stated that it was "a fine example of a polished axe of the middle neolithic period".

A Palaeolithic Hand Axe Still In Use

Helen Davies

At meetings of the Senate of the University of Surrey in Guildford, there are few who appreciate that a tool of the early prehistoric period is used to bring meetings to order.

The gavel is a Middle Acheulian hand-axe, found in a pit at Kempston, Sussex. The specimen is some 300,000 years old but, as the precise horizon in which it lay was not recorded, no closer dating is possible.

This very nice specimen, which measures 190mm in length and 90mm across the butt end, is well made and shows signs of wear from use. There is evidence that several small fossil creatures attached themselves to the hand-axe during its aeons of burial.

A further point of interest associated with the hand-axe turned gavel, is that the baseboard on which it rests is a piece of benching from the old building of the Battersea College of Technology in Battersea Park Road, London which evolved into the University of Surrey.

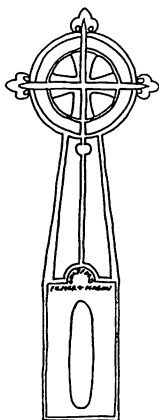
Cast Iron Gravestones

The use of cast-iron for "grave stones" in this country dates back to the mid-1500s when iron slabs started to be used in place of ledger stones to mark the burial places of ironmasters and the very rich in the Wealden area of East Sussex, of which almost 100 examples survive.

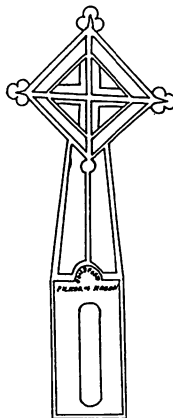
During the latter half of the 19th century a number of smaller foundries, which had hitherto been producing agricultural implements, began to produce items, including cast-iron gravestones, for the domestic market.

The Guildford firm of Filmer and Mason was one of these and began producing cast iron grave memorials from about 1870, many of which still survive in churchyards and cemeteries in Surrey and West Sussex. Very few have been found more than 30-40 miles from Guildford, although one has been found at Coombe Hay in Somerset and another in Northamptonshire.

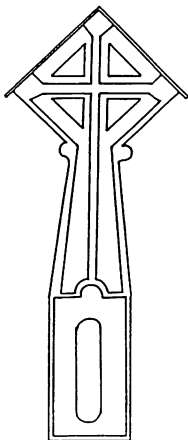
Four main designs have been recorded: model 1 has a circular top, nos 2 and 3 were diamond-shaped and no 4 triangular, and they would have sold for less than £1. Once seen they are easily recognised and identification can be confirmed as “Filmer & Mason” is cast into the memorial at ground level and the model number is on the back. Fourteen examples are to be seen in Cranleigh churchyard.



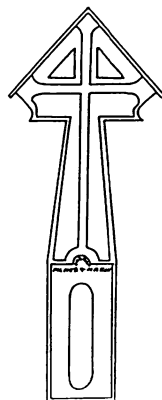
Model 1



Model 2



Model 3



Model 4

Five other designs have been found, but they are flat cross and circle designs which probably sold for five or six shillings. Although some have a name and date cast in to them, most do not, which suggests they were probably stock items purchased from ironmongers or the clergy, and the name printed on as required.

Sixty cast iron gravestones have been discovered to date in Surrey and their distribution is shown below — the majority made by Filmer and Mason, although over 50 foundries are known.

CAST IRON GRAVESTONES FOUND IN SURREY

Town	Type	Landranger Map No.	Grid Ref.	Number found
Alfold	CH	186	TQ 036340	6
Bletchingley	CEM	187	TQ 334507	1
Brookwood Cemetery	CEM	186	SU 956566	2
Bermondsey	CH	176	TQ 3379	1
Busbridge	CH	186	SU 978429	7
Capel	CH	187	TQ 175407	2
Chilworth (St Martha's)	CH	186	TQ 027483	3
Cranleigh	CH	187	TQ 060392	15
Dunsfold	CH	186	SU 997963	6
Godalming (St John)	CH	186	SU 968440	7
Holmbury St Mary	CH	187	TQ 110444	1
Kew (St Anne)	CH	176	TQ 189774	1
Ockley	CH	187	TQ 157408	1
Old Woking	CH	186	TQ 021569	2
Ottershaw	CH	186	TQ 021634	1
Sendgrove	CH	186	TQ 018543	1
Shere	CH	187	TQ 074478	3
South Holmwood	CH	187	TQ 172449	2
Thursley	CH	186	SU 901394	?

(Revised August 1991)

There must be many more to be found and it would be appreciated if anyone finding a metal headstone would record the name, age and date, width and height, together with the location and send to Tony Yoward, Slipper Mill, Emsworth, Hants PO10 8BS. (Abridged from notes prepared by Tony Yoward for SIHG Newsletter)

MISCELLANY

Guildford-Farnham Line. Details of the Tongham branch line, photographs of the line in action or any other information welcomed by Maurice Lawson at "Lebanon", Chobham Road, Woking, Surrey (tel: 0483-760993).

The Lutyens Trust has been donated its first Lutyens building, "Goddards" at Abinger Hammer, which has a garden designed by Gertrude Jekyll. The house, built in 1898 and perfectly preserved, has been given to the Trust by Mr and Mrs M W. Hall in memory of their son, an architect, who died in 1988. The Trust plans to open Goddards to the public during 1992 and hopes to run it as an educational centre.

"Marney's Pond". Efforts are being made to restore Marney's Pond, Weston Green, near Esher, to its former glory. Surrey County Council, Elmbridge Borough Council, the National Rivers Authority and conservationists are working in close co-operation and would welcome any historical information on this area. Contact Mrs Cherry Penfold, 11 Oaklands Avenue, Esher, tel: 081-398 8392.

PUBLICATIONS

The Roberts Map of Croydon 1847. This map, first published after the arrival of the railways, but still before Croydon's urban development has been reissued by AMCD Publishers, PO Box 102, Purley, Surrey CR8 3YX. Price £5 (inc. p & p) unframed, or £30 framed (free delivery in the Croydon area). Also published by the AMCD "Around Haunted Croydon" and "Surrey Ghosts Old and New" by Frances D Stewart; and "Lords of Croydon Old Palace" by Yvonne M Walker. £5 each including p & p.

"The National Monuments Record — a Guide to the Archive". The Royal Commission on the Historic Monuments of England has published a guide to the archive holdings of the National Monuments Record (NMR). It comprises three sections, National Archaeological Record, the National Buildings Record and the National Library of Air Photographs. Copies are available from the Publications Dept, RCHME, 37-40 Berners Street, London W1P 4BP. Price £5.50 plus p & p £1.45.

"Golf Course Proposals in Historic Landscapes" — a four page statement by English Heritage, obtainable from EH, 429 Oxford Street, London W1R 2HD. A larger report on this subject has been prepared by the Georgian Group, the Garden History Society and the Federation of Garden History Trusts, obtainable from the Georgian Group (tel 071-377 1722).

"Farming Historic Landscapes and People" — an illustrated booklet jointly produced by English Heritage and Agricultural Development and Advisory Service and intended to show that conservation need not conflict with good agricultural practice. Available free from EH, Room 309, Fortress House, 23 Savile Row, London W1X 1AB.

EXHIBITIONS

Exhibition of Drawings and Watercolours from the National Monuments Record of Scotland. A fascinating study of Scottish architecture at the Heinz Gallery, 21 Portman Square, London W1. Mondays to Fridays 11 – 5 pm. Saturdays 10 – 1 pm until 22nd February 1992.

To 8th March: **The Making of England — Anglo-Saxon Art and Culture from Augustine to Alfred, AD 600-900.** An exhibition at the British Museum. A celebration of the flowering of Anglo-Saxon art and learning.

CONFERENCES : DAYSCHOOLS : COURSES

Medieval Settlements in Wessex. 22nd February. Day School at Salisbury & South Wilts Museum. £11. Details from University of Bristol, Dept for Continuing Education, Wills Memorial Building, Queens Road, Bristol BS8 1HR.

Gilbert White: Naturalist and Historian. 6th (evening)-8th March. Weekend course at the Oxford Dept for Continuing Education, Rewley House, Wellington Square, Oxford OX1 2JA.

Prehistoric Pottery. 21-22 March. Practical Archaeology weekend at Oxford Dept for Continuing Education, Rewley House, Wellington Square, Oxford, OX1 2JA.

Archaeology and the Landscape. A seminar organised by the Royal Archaeological Institute in association with the Dept for Continuing Education, Bristol. 3rd-5th April 1992. Lectures include the Somerset Levels, Placenames in Somerset, the Mendips Landscape, Castles, Churches, the development of a townscape and problems of conservation. Details on receipt of sae to the Assistant Secretary, Royal Archaeological Institute, c/o Society of Antiquaries, Burlington House, Piccadilly, W1V OHS.

Aspects of Archaeology and History in Rochester. Saturday 11th April 1992. 11.00 am – 5.15 pm. Spring Conference organised by the Council for Kentish Archaeology. Details below.

GUIDED TOUR OF HISTORIC ROCHESTER	11.00 am – 12.40 pm
ASPECTS OF ARCHAEOLOGY AND HISTORY IN ROCHESTER (with illustrated talks and bookstalls)	2.00 pm – 5.15 pm
Roman Rochester	Susan Haydock
Recent excavations by KARU in Rochester	Brian Philp
The History of Rochester Bridge (18th to 20th centuries)	Jim Preston
Work on the Later Medway Forts	Geoff Harvey

TICKETS: PRICE £4. (Payable CKA) from:

5 Harvest Bank Road, West Wickham, Kent BR4 9DL (sae please)

MEETINGS 1992

1st February

"Surrey Churches". A talk by Charles Abdy to the Beddington, Carshalton & Wallington Archaeological Society in the Milton Hall, Cooper Crescent, Carshalton Road at 3.00 pm.

4th February

"The Museum in Docklands". A talk by Chris Ellemers at the Hawkestone Hall, Kennington Road at 7.30 pm. Light refreshments 7.00 pm.

6th February

"The Historic Landscape Project". A talk by Steve Dyer to the Spelthorne Archaeological Field Group in the Debenham Room at the Old Town Hall, Staines at 8pm.

6th February

"Norman Castles: parallels to Farnham Castle". A talk by Derek Renn to the Farnham & District Museum Society at the United Reformed Church Hall, Farnham at 7.30 for 7.45 pm.

7th February

"Architecture from Augustine to Alfred". Morley Medieval lecture by Dr Richard Gem at the British Museum. (Morley Medieval is a subscription lecture society which invites specialists to talk on their area of expertise. £15 per annum individual lectures £2.).

14th February

"The Lindisfarne Gospels". Morley Medieval Lecture by Janet Backhouse at the British Museum at 6.45. Charge £2.

14th February

"The Etruscan and Other Early Peoples in Italy". A talk by Judith Swaddling of the British Museum to the Richmond Archaeological Society in the Vestry Hall, Paradise Road, Richmond at 8 pm.

15th February

Annual Symposium organised by the Archaeological Research Committee at the St Martin's Christian Centre, Dorking.

18th February

"Christ's Hospital, Horsham". A talk by the school's Curator and Archivist Mr N Plumley to the West Surrey Branch of the Historical Association at the Friends' Meeting House, Ward Street, Guildford at 7.30 pm.

19th February

"Castles in Surrey". A talk by Dennis Turner to the Holmesdale NHC at the Museum, 14 Croydon Road, Reigate at 8.15 pm.

20th February

"Almshouses in Richmond". A talk by Mr John Cloake to the Barnes and Mortlake History Society in the Main Hall, Sheen Lane Centre at 8 pm.

20th February

"White Monks at Waverley". A talk by Ruth Higman to the Farnham and District Museum Society at the United Reformed Church Hall, South Street, Farnham at 7.30 for 7.45 pm.

21st February

"The Admiralty Telegraph & Semaphore Lines from London to Portsmouth". An illustrated talk by Ernest Crossland to the Leatherhead and District LHS in the Dixon Hall, Leatherhead Institute at 7.30 pm for 8 pm.

22nd February

"Snuff and Tobacco Mills". A talk to the Merton Historical Society at 2.30 pm.

22nd February

"Tudor and Stuart Surrey". A Lecture by Dr Peter Edwards to the Walton & Weybridge LHS in the Elmgrove Meeting Room, Walton at 3 pm.

26th February

"The Maundy Service". A talk by Mr P Wright, Secretary of the Royal Almonry in St Mary's Church Hall, Bell Road, East Molesey at 2.30 pm.

28th February

"The Illuminated Book in Southern Britain". Morley Medieval lecture by Michelle Brown at the British Museum at 6.45 pm. Charge £2.

28th February

"The Archaeology of North Cyprus". A talk by the Viscountess Hanworth to the Holmesdale NHC at The Museum, 14 Croydon Road, Reigate at 8.15 pm.

3rd March

Recent Archaeological and Historical Research. A talk to the Southwark and Lambeth Archaeological Society at Hawkstone Hall, Kennington Road, SE1. Light refreshments 7 pm. Lecture 7.30 pm.

6th March

"Alfred the Great". Morley Medieval Lecture by Mr Simon Keynes at the British Museum at 6.45 pm. Charge £2.

10th March

Leatherhead & District LHS AGM followed by a talk "Leatherhead Then and Now" by Linda Heath in the Dixon Hall, Leatherhead Institute 7.30 pm for 8 pm.

12th March

"Archaeology at Windsor Castle". A talk by Sue Shanks to the Spelthorne Archaeological Field Group in the Debenham Room, Old Town Hall, Staines at 8 pm.

13th March

"Neolithic Avebury — Recent Research". A talk by Dr Alasdair Whittle of the University of Wales to the Richmond Archaeological Society in the Vestry Hall, Paradise Road, Richmond at 8 pm.

19th March

"Froyle — a village of saints". A talk by Lt Col John Willcocks to the Farnham and District Museum Society in the United Reformed Church Hall, Farnham at 7.30 for 7.45 pm.

ADVANCE NOTICE**4th April**

Surrey Local History Council Spring Meeting. "Surrey and Europe". Haslemere Educational Museum at 2 pm.

4th July

Surrey Archaeologists' Day at Castle Cliffe Gardens, Guildford.

16th August

Open Day at Crossways Farm, Abinger. 17th century farmhouse and recently reconstructed barn; conducted tours by DBRG.