



**SURREY ARCHAEOLOGICAL SOCIETY**  
**CASTLE ARCH, GUILDFORD GU1 3SX**  
**Guildford 32454**

# Bulletin

Number 251

October 1990

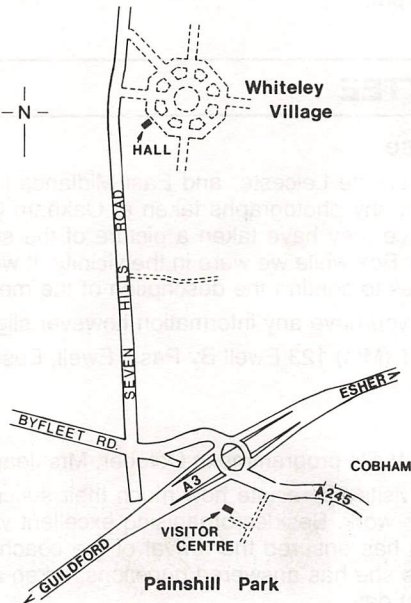
---

## COUNCIL NEWS

---

### Visit to Painshill Park

A special visit has been arranged to Painshill Park, prior to the Annual General Meeting, by kind invitation of the Trustees. Guided tours will commence at the Visitor Centre (see sketch map) at 1.15 p.m. and groups will depart at 5 minute intervals (a transit van will be available for those not able to walk for the full one and a half hour tour). If the weather is unsuitable, videos about the Park will be shown. There is ample car parking available on both sides of the road leading to the Visitor Centre. Following the tours, those wishing to attend the Annual General Meeting should drive to Whiteley Village (approx. 10 minutes from the Park; see sketch map). There is car parking in front of, and to one side of, the Village Hall.



### Annual General Meeting

Notice is hereby given that the Annual General Meeting of the Incorporated Surrey Archaeological Society will be held at 3.15 p.m. on Saturday, 24th November, 1990 at Whiteley Village Hall, Walton-on-Thames, Surrey.

## **Agenda for Annual General Meeting**

1. Apologies for absence.
2. To read and, if appropriate to sign as correct, the minutes of the Annual General Meeting of 25th November 1989.
3. To receive and consider the Annual Report, the Statement of Accounts, and the Auditor's Report for the year to 31st March 1990, and if approved, to accept them.
4. To elect the President for 1990-1991.
5. To elect Honorary Vice-Presidents for 1990-1991.
6. To elect Vice-Presidents for 1990-1991.
7. To elect Honorary Officers for 1990-1991.
8. To elect six Ordinary Members of Council to retire in 1994 under Article 21a. (Nominations for election under items 4-8 should be sent to the Honorary Secretaries not less than seven days before the meeting. All nominations require a proposer and seconder, who must be members of the Incorporated Society, and nominations must be accompanied by a signed statement by the nominee of his or her willingness to stand for election. Institutional members are not eligible for election.
9. To appoint the Honorary Auditors for 1990-1991.
10. Any other business.

The Annual General Meeting will be followed by an illustrated talk by Mrs M A G Collier on 'The Hon Charles Hamilton's work at Painshill'. Tea will be served following the talk, at approx 4.40 pm.

---

## **VISITS COMMITTEE**

---

### **Can you help please**

Will anybody who was on the Leicester and East Midlands long stay week in July please carefully recheck any photographs taken at Oakham Church, the interior or porch to see if by chance they have taken a picture of the suspected thieves who robbed the Church Poor Box while we were in the vicinity. It would help the Oakham police with their enquiries to confirm the description of the men concerned.

Please contact writer if you have any information however slight.

Thank you. JEAN WEST (Mrs) 123 Ewell By Pass, Ewell, Epsom, Surrey KT17 2PX

### **Wanted**

At the end of this year's Visits programme in October, Mrs Jean West will be retiring. Members enjoying our visits appreciate how much their success has depended on Jean's unflinching, reliable work. Besides organising excellent visits herself, both one day and long stay, she has ensured the arrival of the coach and enlisted enough people to fill it. On visits she has answered questions, taken money, paid bills, and helped the leader of that day.

Our requests made throughout the year for offers to act as secretary and/or treasurer have not been successful.

The Committee has met and we have prepared what could be a most enjoyable programme for 1991. However it will be impossible to organise such visits without a secretary and treasurer.

Previously the jobs of secretary and treasurer have sometimes been separate and sometimes combined with one person, so we need offers to do either or both jobs.

Next year's programme depends entirely on the solution of our problem. Unless a replacement can be found for Jean, no visits will take place next year.

If you can help, please let me know. JOSEPHINE M CARTER, 20 Chaucer Court, Lawn Road, Guildford GU2 5DB (0483 – 505502)

---

## **NOTES**

---

### **The Howard Family Vault in Great Bookham Churchyard**

**Ernest Crossland**

On 14/15th July 1990 a few members of the Leatherhead & District Local History Society identified, examined and recorded the contents of the Howard Family vault in the churchyard of the church of St Nicholas at Great Bookham. They found it to be a brick built structure no more than 6" below the grass, 30' long, 12' wide and 8' high lying along the south wall of the tower of the church. The entrance is at the east end through an arch 7' wide and 8' high but entrance was gained from the west end at a point where a recent trench dug by the Gas Board had revealed a point where access had been effected some time in the past.

Mr Stephen Fortescue's researches had shown that 30 members of the Howard family had been buried at Great Bookham following the grant of the manor to them in 1550 which they sold in 1801. Of these, 17 were surmised to be in the vault. In fact 16 coffins were found laid on the floor in 6 alcoves (3 on each side with a clear area 7' wide down the centre), with 7 coffins lined against the west wall.

Most of the coffins were of lead encased in wood and covered with fabric (probably red velvet) fixed to the metal with dome-headed brass studs similar to drawing pins. On this had been fixed various plaques and inscription plates denoting the rank of the deceased, name, date of death, age, etc.

The earliest burial (in 1743) appeared to be of Francis Howard, First Earl of Effingham (created 8th December 1731) and the last of Miss Georgiana Ann Vyse who died 13th May 1857. The uncertainty concerning the first Earl's burial is that the coffin assumed to be his lies below that of Anne, Countess Dowager of Effingham, (his 2nd wife and widow) who died 15 November 1774. However, on the wall adjacent to these two coffins, is an interment plaque of an Earl. The first Earl died in 1743 and this date is scratched on the northern jamb of the entrance arch.

Some coffins had been supported on baulks of timber which had largely rotted away and with several of them the lead had corroded in places. Two small coffins were obviously of children. They had no identification plates nor any decoration. In all probability they were of Francis and Thomas Howard, children of Lieut General Thomas and Mary since their father lies in the opposite bay and Catherine, a daughter, is in the same bay with them.

The two bays at the eastern end and the ceiling between them had been white-washed but the rest of the brick-work had not been treated — presumably as it would not be seen from the entrance.

Thanks are due to those who sanctioned the investigation or helped with the work but in particular to 3rd Bookham Venture Scout Unit who toiled on a very hot afternoon and then mounted an all-night guard and to Rev A C Warner for his interest and encouragement and the loan of flood-lights to make possible the photographic record.

## **Caterham Court development. TQ 342 552**

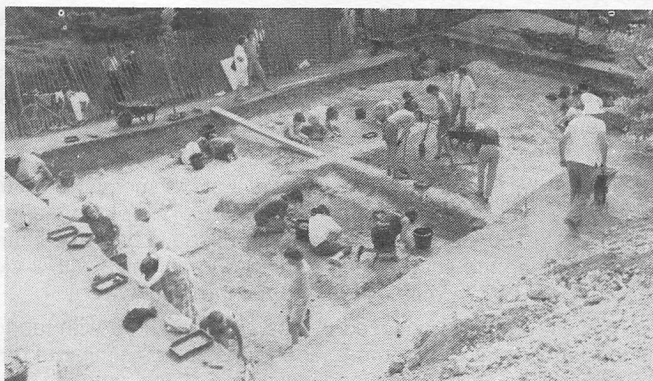
**L Ketteringham**

Following notification that a piece of land in the corner of Stanstead Road and Church Hill, Caterham, is to be developed, watch was kept during the foundation trench digging. The reason for possible interest is that this was the entrance to Caterham Court, Tudor period but demolished early 20th century, and that this building may have occupied the site of, or been very close to, the 12th century manor which is believed to have been in the vicinity. The old Church of St Lawrence (11th century) stands next door. Nothing was found except the hard standing for the drive from the corner of the road to the house, which stood outside the development area.

It may be of interest that when the extension to Dean Hospital, Caterham was being built in 1984 12th-13th century pottery was found in an area less than 200 yards from the church.

## **Guildford Castle Excavation 1990**

**Rob Poulton, Senior Field Officer, Surrey County Council**



*General view of the excavations looking south-east*

The training excavation at Guildford Castle, organised jointly by the Society, the Surrey County Archaeological Unit (Surrey County Council) and Guildford Museum, took place between 2nd July and 22nd July. The dig was a considerable success and warm thanks are due to Guildford Borough Council for permission to excavate in the Castle Cliffe Gardens and to the various sponsors: Gerry Lytle Associates, Plastic Coatings Ltd, Peat Marwick McLintock, Colgate Palmolive, Bentley Brown Equipment and a number of individuals.

The work was organised with three principal objectives in mind. The need for a training excavation, to introduce people to the techniques of archaeological excavation and to extend their knowledge of them, had been apparent for some time. This was amply demonstrated by the heavy demand for places on the excavation. The team averaged around 25 people per day, and responded with enthusiasm to a site which demanded rather more heavy work than had been anticipated in often very hot weather.

There was much success also in achieving the second objective of raising the public profile of archaeology in the County. Considerable interest was aroused, with numerous school parties visiting the excavation, guided tours for the general public, and useful press coverage. There can be little doubt of the long term beneficial effects of this publicity.

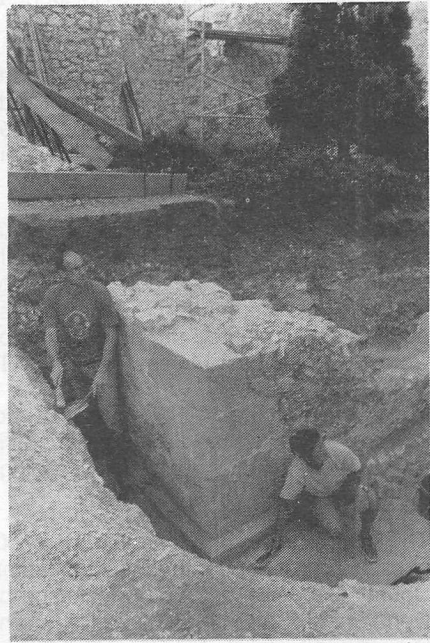
Finally there was the archaeology itself. The dig had begun with the intention of locating some parts of the important Royal Palace which had lain within the Castle boundary in the 13th century. The most notable discovery in this regard was the



corner of a building constructed in fine ashlar, with a part-rendered external face and a painted interior. From the demolition rubble around a considerable number of fragments of high quality mouldings were recovered. The excavated walls were evidently part of a building whose southern and western walls still stand at the edge of Castle Cliffe Gardens, and whose approximate dimensions are some 50ft by 25ft (15m by 7.5m). These dimensions agree closely with those given in an order for the construction of Lord Edward's Chamber in 1246, and it seems a reasonable surmise that this is the building discovered in excavation.



*Three wise men wonder whether the Outer Bailey ditch is bottomless*



*The corner of the building which may be Lord Edward's chamber. In the background a standing wall belonging to the same structure can be seen*

Further discoveries made were something of an unexpected bonus. At the eastern edge of the excavation a large and deep ditch was discovered, which limited pottery evidence suggested had been largely infilled by the early 13th century. Its exact dimensions could not be recovered within the area opened, but its massive size, alignment, and pre-13th century date encourage the view that this was the original Outer Bailey ditch of the Castle before the Palace was established on new ground between it and new defensive walls along the line of Quarry Street, including the Castle Arch. In the closing days of the excavation a large and deep feature terraced out of the natural chalk was discovered in the central area of the excavation. Walls built from chalk were identified within this, but time prevented proper investigation, although a 12th century date and an industrial function both seemed probable.

In sum the dig represented a most encouraging start to work at Guildford Castle. Several further seasons of work are planned and these now have a firm base from which to build.

---

## **PUBLICATIONS**

---

**The Watermills of Surrey** by Derek Stidder. The story of over 100 known mills with maps and diagrams. Limited edition of numbered copies available from publisher ONLY by prior reservation at £16.95.

Unnumbered copies post-publication at c£18.00. Apply to Barracuda Books Ltd, Meadows House, Well Street, Buckingham MK18 1EW for further details. Do not send money now.

**The Dallaway History of Leatherhead** Facsimile hardback limited 1975 edition of James Dallaway's classic history of Leatherhead first published in 1821 under the title "Etchings of Views in the Vicarage of Leatherhead". Illustrations by Harriet Dallaway with an Introduction by Francis W Steer, MA DLitt FSA. A few copies are available from Dr R Humphreys, Dorking 882710 at £4.

**"Thomas Earp, Master of Stone"** by Antony Mitchell, secretary of the Esher District LHS. Thomas Earp (1828-1893), the author's grandfather, was a sculptor whose work can be found in many places, including Magdalen College Chapel, Oxford, the Royal Courts of Justice and the Eleanor Cross in the Strand. Copies of this well-illustrated book, autographed by the author, can be obtained from Mr Mitchell at 28 Hampton Court Avenue, East Molesey, Surrey KT8 0BQ. Price £13.95.

**"Shepperton Story"** by Valerie Brooking with illustrations by Janet Roberts, published by Sunbury & Shepperton LHS, contains a comprehensive description of Shepperton including its history, buildings, personalities and natural history. Price £6 from local bookshops.

**The Cambridgeshire Handbook of Church Fabric** by Robert Walker. A joint publication of the Cambridgeshire Historic Churches Trust and the Cambridgeshire County Council (1990 £5.50 including p & p. Obtainable from the County Planning Department, Shire Hall, Castle Hill, Cambridge CB3 0AP). Cambridgeshire Planning Department is already the source of the most useable guide and aide-mémoire to historic buildings legislation and the indefatigable Robert Walker has produced a guide that, although ostensibly for those working in his county, will be taken as a model and source for the whole country.

**Churches in Retirement** sub-titled 'The Redundant Churches Fund' and published by HMSO (1990 £9.95 ISBN 0 11 701452 4). An attractive, abundantly illustrated gazetteer of churches vested in the Redundant Churches Fund (only two in Surrey). The photos by Christopher Dalton show not just the architectural quality of the churches which the fund has cared for in the twenty years since it was set up but also the loving attention which they now receive. It is a sobering thought that, without the fund, the 250 or so churches illustrated might now be heaps of rubble or bijou residences.

---

## CONFERENCE

---

**Council for Kentish Archaeology**  
**THE BATTLE OF BRITAIN**

on

**SATURDAY 17th NOVEMBER, 1990**  
(2.15 to 5.30 pm)

at

**CHRIST CHURCH COLLEGE, NORTH HOLMES ROAD,  
CANTERBURY**

---

a half-day Conference to commemorate the  
50th anniversary of the Battle of Britain

“The Battle of Britain” (with special reference to Kent)	Frank K Mason <i>(author of “Battle over Britain”)</i>
“World War II Aircraft Recovery in Kent”	Richard Windrow <i>(Kent Battle of Britain Museum)</i>
“Hell Fire Corner in Dover”	Terry Sutton <i>(Chief Reporter, Dover Express)</i>

---

Bookstalls and light refreshment

TICKETS: Price £1 (payable CKA) from:  
5 Harvest Bank Road  
West Wickham, Kent BR4 9DL  
(sae please)

FRIENDS OF CKA: Free admission; please apply to above address for pass ticket.

---

## MEETINGS

---

### 3rd October

“Medieval London Bridge and some Surrey Links” a talk by Derek Renn to the Nonsuch Antiquarian Society at St Mary’s Church Hall, Kingston Road, Ewell at 8.00 pm

### 5th October

“The Schoolmaster’s Daughter” a lecture by Mark Sturley to the Guildford Group of the SAS at the Guildford Institute, Ward Street, Guildford at 8.00 pm

### 11th October

“London’s Water” a talk by Derek Gooding of The Kew Bridge Trust to the Barnes and Mortlake History Society in the Main Hall at the Sheen Lane Centre at 8 pm

### 18th October

“A Visit to Farnham” an illustrated talk by Pat Heather to the Farnham & District Museum Society at Farnham Museum at 8.00 pm

### **19th October**

"Building Conservation in Surrey" The Dallaway Lecture by Dennis Turner FSA to the Leatherhead and District LHS at the Dixon Hall, The Institute, Leatherhead at 8.00 pm. Entry 20p members; 50p visitors including coffee

### **25th October**

"Archaeological Work in Runnymede" by Steve Dyer to the Egham by Runnymede Historical Society at the Literary Institute, Egham at 8.00 pm

### **26th October**

"A Dream of Dragons — their history and art" a talk by Jeremy Harte to the Wandsworth Historical Society at the Friends' Meeting House, Wandsworth High Street at 8.00 pm

### **26th October**

"Bygone Ashtead" an illustrated talk given by Michael Gale as part of the Mole Valley Festival Arts at the Ashtead Peace Memorial Hall at 8.00 pm. Tickets £2 at the door

### **27th October**

"Medieval Surrey" a talk by Dennis Turner FSA to the Walton and Weybridge LHS at Weybridge Library Lecture Hall at 3.00 pm

### **1st November**

"Surrey's Industrial History" a talk by Francis Heveron to the Farnham & District Museum Society at Farnham Museum at 8.00 pm

### **7th November**

"Along the Pilgrims Way to Canterbury" a talk by Charles Abdy to the Nonsuch Antiquarian Society at St Mary's Church Hall, Kingston Road, Ewell at 8.00 pm

### **10th November**

"Archaeology of Sutton" The second symposium organised by Sutton Heritage Committee and the Surrey Archaeological Society at Sutton Library

### **10th November**

"The Artist in Surrey" — Surrey Local History Symposium at Guildford University

---

**Editor's Note:** This is the first issue of the Bulletin for many years which has not had the benefit of Ian Dormor's guiding hand. When in need of a printer, Ian came to the rescue about twenty years ago, and started by doing the type-setting in his garage; his quiet advice and continuing forbearance has been greatly appreciated by successive Editors. Recently his wife Lorna has been involved too in despatching the Bulletin. Ian has decided to go back to College and embark on a new career in Countryside Management and has temporarily moved to Kent. We are most grateful for all their hard work on behalf of the Society and wish them good luck in their new venture.

---

**Editor:** Audrey Monk, Bryony Bank, Beech Hill. Hambledon, Nr. Godalming GU8 4HL

**Next Issue:** Copy to the Editor required by 4th October 1990 for November issue